

GADGET

Tracheostomy Adapter

A. E. YEAKEL, M.D., AND N.W.B. CRAYTHORNE, M.B., B.CH.*

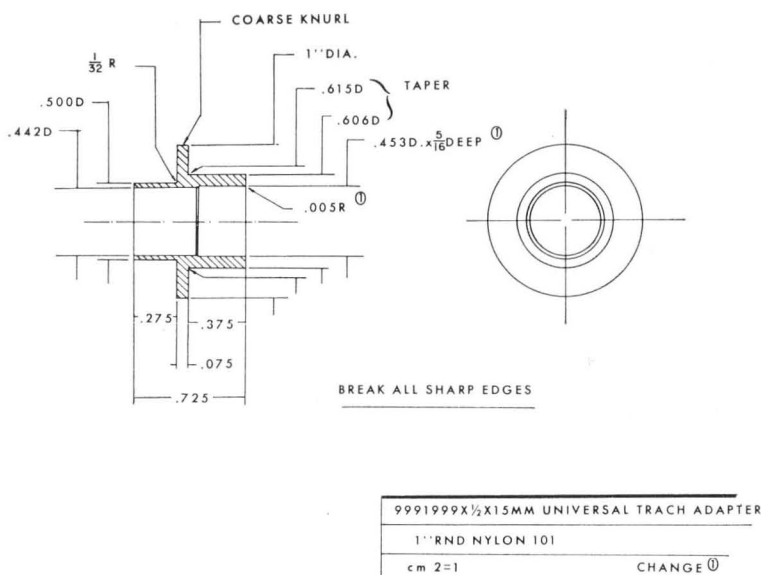


FIGURE 1.

Complete adaptability of any tracheostomy tube to any IPPB machine, anesthetic breathing circuit, or emergency resuscitator has been accomplished by: (1) stocking tracheostomy tubes, all of which have 14 mm. (Adams type) flanges on their inner canulae,† and (2) employing a plastic "universal" adapter, which we have designed and had produced ‡ (detailed in figure 1 and illustrated in figure 2).

On the patient side, the adapter fits securely over any tracheostomy tube (fig. 2) from size 00 to 8. The equipment side provides a 15-mm. male connection to standard anesthetic

female fixtures such as Y-pieces, nonbreathing valves or elbow adapters. In addition, the inside diameter accepts the Bennett elbow or Bird Q-circle Y-piece.

This adapter simplifies connection of tracheostomy tubes of various sizes to IPPB equipment and to anesthesia breathing circuits. It has a knurled collar which facilitates manual grip.

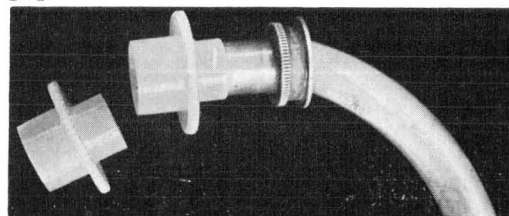


FIGURE 2.

* Division of Anesthesiology West Virginia University, Morgantown, West Virginia.

† Tubes available from George Pilling and Son, Delaware Drive, Fort Washington, Pennsylvania.

‡ Adapters available from Bird Corporation, Palm Springs, California.