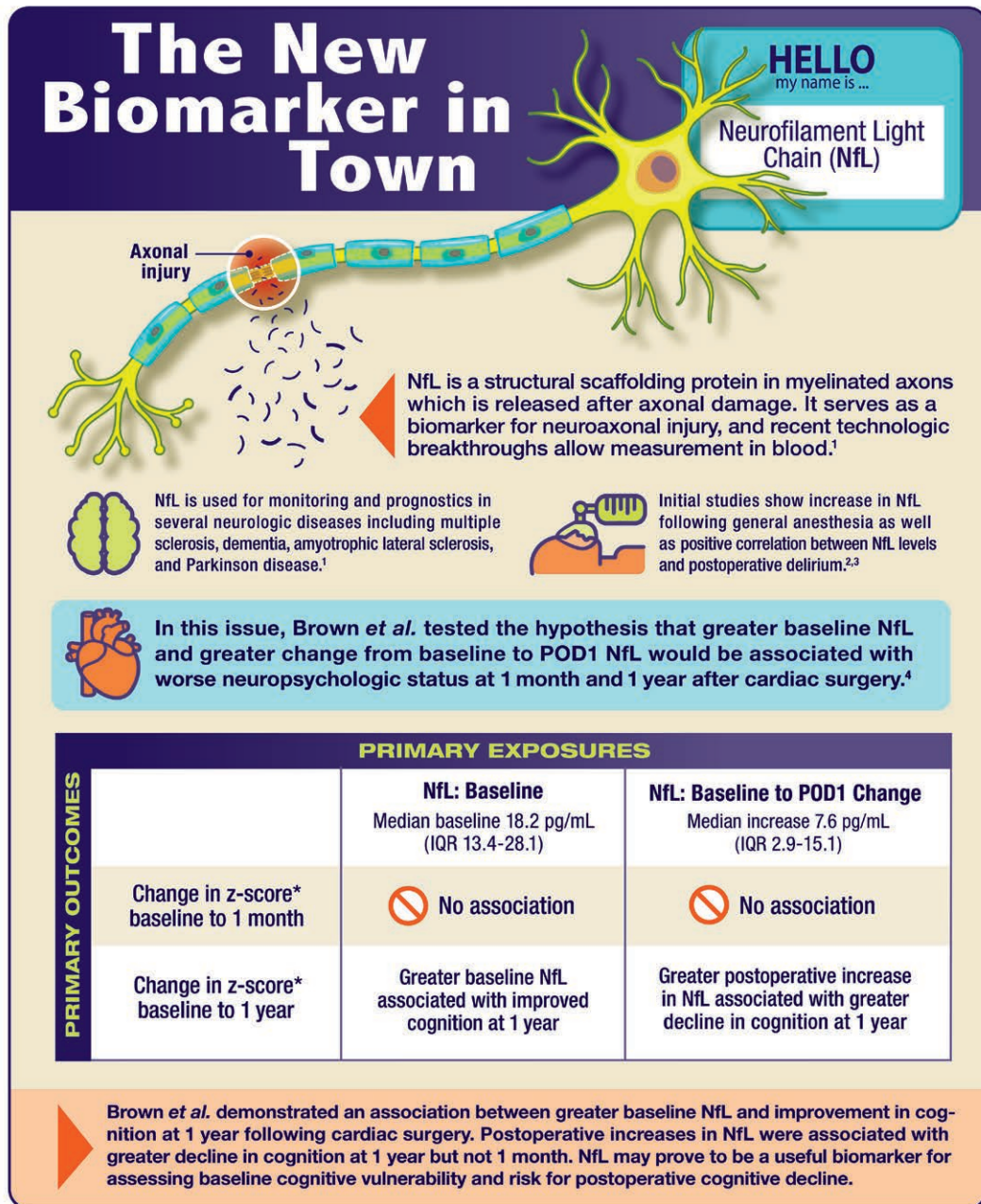


INFOGRAPHICS IN ANESTHESIOLOGY

Complex Information for Anesthesiologists Presented Quickly and Clearly



IQR, interquartile range; POD1, postoperative day 1.

*Composite cognitive z-scores were calculated from z-scores for individual cognitive tests based on mean and standard deviation of baseline tests. Cognitive tests performed at each assessment included Rey Auditory Verbal Learning Test, Rey Complex Figure Test, Controlled Oral Word Association Test, Symbol Digits Modalities Test, Trail Making Tests A and B, and Grooved Pegboard Test.

Infographic created by Holly B. Ende, Vanderbilt University Medical Center; James P. Rathmell, Brigham and Women's Health Care/Harvard Medical School; and Jonathan P. Wanderer, Vanderbilt University Medical Center. Illustration by Annemarie Johnson, Vivo Visuals Studio. Address correspondence to Dr. Ende: holly.ende@vumc.org.

1. Khalil M, Teunissen CE, Otto M, Piehl F, Sormani MP, Gatringer T, Barro C, Kappos L, Comabella M, Fazekas F, Petzold A, Blennow K, Zetterberg H, Kuhle J: Neurofilaments as biomarkers in neurologic disorders. *Nat Rev Neurol* 2018; 14:577–89.
2. Evered L, Silbert B, Scott DA, Zetterberg H, Blennow K: Association of changes in plasma neurofilament light and tau levels with anesthesia and surgery: Results from the CAPACITY and ARCADIAN studies. *JAMA Neurol* 2018; 75:542–7.
3. Casey CP, Lindroth H, Mohanty R, Farahbakhsh Z, Ballweg T, Twadell S, Miller S, Krause B, Prabhakaran V, Blennow K, Zetterberg H, Sanders RD: Postoperative delirium is associated with increased plasma neurofilament light. *Brain* 2020; 143:47–54.
4. Brown CH IV, Lewis A, Probert J, Parish M, Tian J, Mandal K, Everett A, Colantuoni E, Kamath V, Hogue C, Moghekar A: Perioperative neurofilament light plasma concentrations and cognition before and after cardiac surgery: A prospective nested cohort study. *ANESTHESIOLOGY* 2022; 137:303–14.