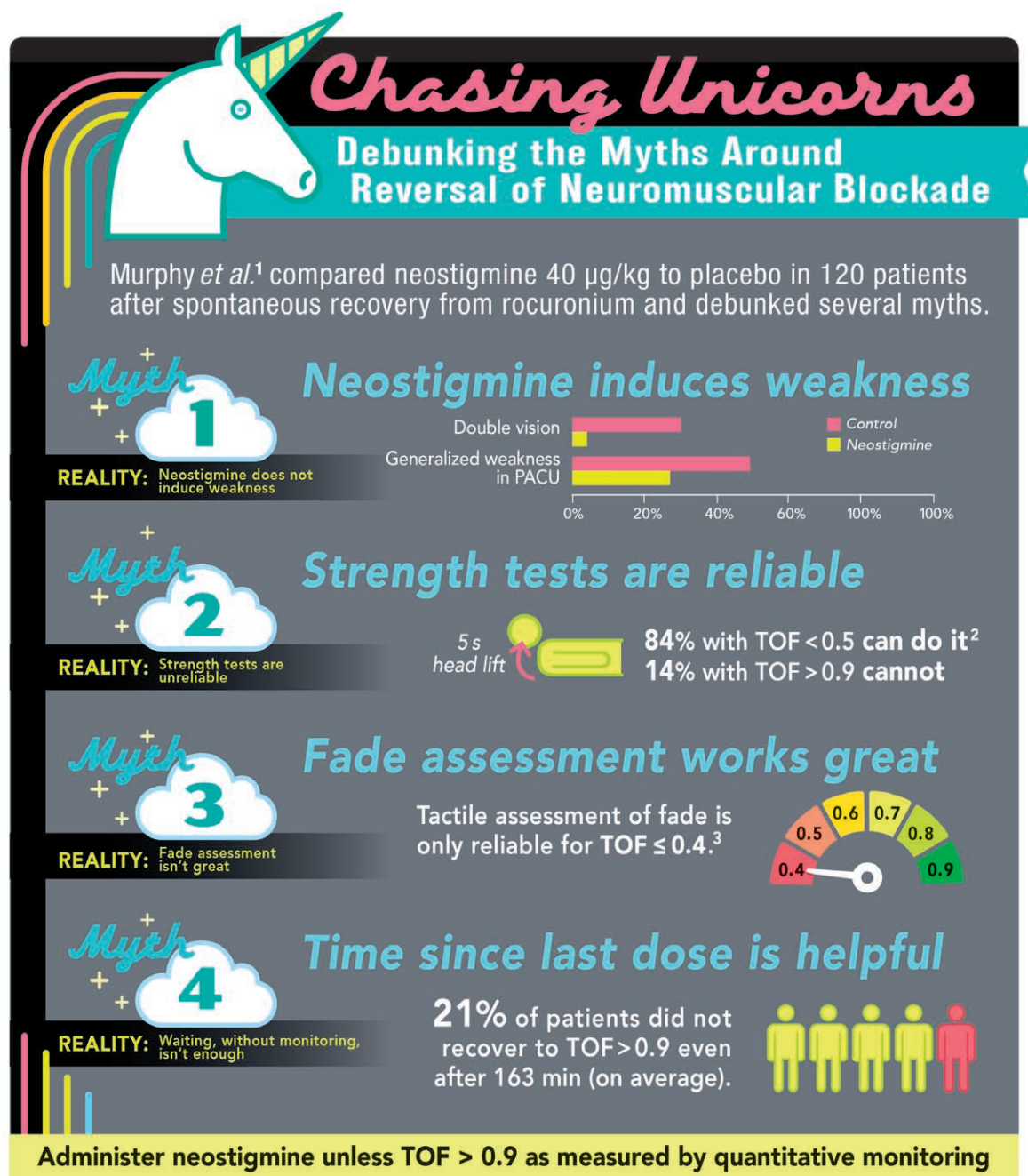


ANESTHESIOLOGY



PACU = postanesthesia care unit; TOF = train-of-four.

Infographic created by Jonathan P. Wanderer, Vanderbilt University Medical Center, and James P. Rathmell, Brigham and Women's Health Care/Harvard Medical School. Illustration by Annemarie Johnson, Vivo Visuals. Address correspondence to Dr. Wanderer: jonathan.p.wanderer@vanderbilt.edu.

1. Murphy GS, Szokol JW, Avram MJ, Greenberg SB, Shear TD, Deshur MA, Benson J, Newmark RL, Maher CE: Neostigmine administration after spontaneous recovery to a train-of-four ratio of 0.9 to 1.0: A randomized controlled trial of the effect on neuromuscular and clinical recovery. *ANESTHESIOLOGY* 2018; 128:27–37

2. Brull SJ, Naguib M: How to catch unicorns (and other fairytales). *ANESTHESIOLOGY* 2018; 128:1–3

3. Viby-Mogensen J, Jensen NH, Engbaek J, Ording H, Skovgaard LT, Chraemmer-Jørgensen B: Tactile and visual evaluation of the response to train-of-four nerve stimulation. *ANESTHESIOLOGY* 1985; 63:440–3