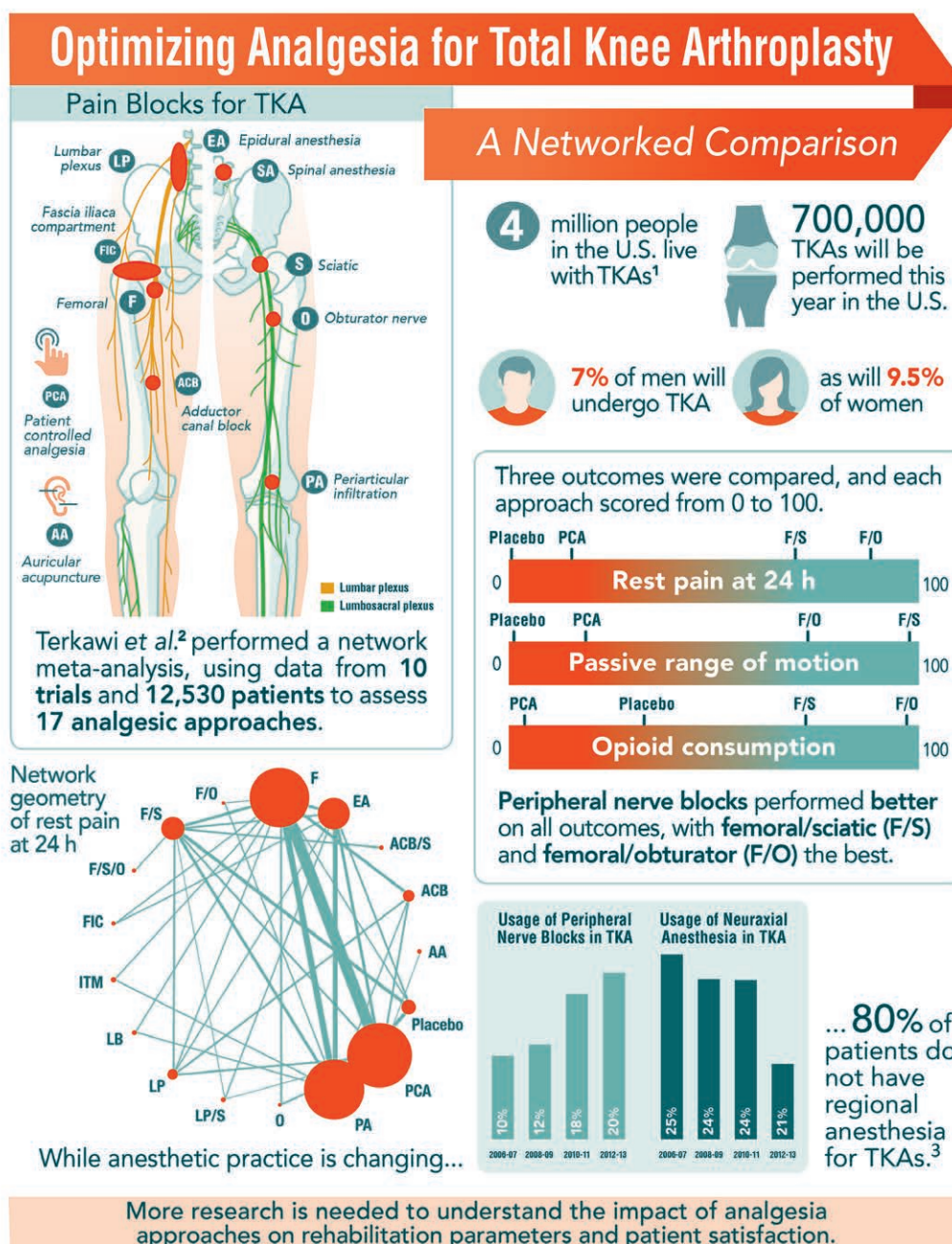


# ANESTHESIOLOGY



F/S/O = femoral + sciatic + obturator nerve blocks; ITM = intrathecal morphine; LB = liposomal bupivacaine infiltration; LP/S = lumbar (psoas) plexus + sciatic nerve blocks; TKA = total knee arthroplasty. *Note:* All abbreviations in the network geometry diagram are defined in Terkawi et al.<sup>2</sup>

Infographic created by Jonathan P. Wanderer, Vanderbilt University School of Medicine and James P. Rathmell, Brigham and Women's Health Care/Harvard Medical School; illustration by Annemarie Johnson, Vivo Visuals. Address correspondence to Dr. Wanderer: jonathan.p.wanderer@vanderbilt.edu.

1. Weinstein AM, Rome BN, Reichmann WM, Collins JE, Burbine SA, Thornhill TS, Wright J, Katz JN, Losina E: Estimating the burden of total knee replacement in the United States. *J Bone Joint Surg Am* 2013; 95:385-92

2. Terkawi AS, Mavridis D, Sessler DI, Nunemaker MS, Doais KS, Terkawi RS, Terkawi YS, Petropoulou M, Nemergut EC: Pain management modalities after total knee arthroplasty: A network meta-analysis of 170 randomized controlled trials. *ANESTHESIOLOGY* 2017; 126:923-37

3. Cozowicz C, Poeran J, Zubizarreta N, Mazumdar M, Memtsoudis SG: Trends in the use of regional anesthesia: Neuraxial and peripheral nerve blocks. *Reg Anesth Pain Med* 2016; 41:43-9