

Long-term Effects of Remote Ischemic Preconditioning on Kidney Function in High-risk Cardiac Surgery Patients

Follow-up Results from the RenalRIP Trial

Alexander Zarbock, M.D., John A. Kellum, M.D., Hugo Van Aken, M.D., Christoph Schmidt, M.D., Mira Küllmar, M.D., Peter Rosenberger, M.D., Sven Martens, M.D., Dennis Görlich, Ph.D., Melanie Meersch, M.D.

ABSTRACT

Background: In a multicenter, randomized trial, the authors enrolled patients at high-risk for acute kidney injury as identified by a Cleveland Clinic Foundation score of 6 or more. The authors enrolled 240 patients at four hospitals and randomized them to remote ischemic preconditioning or control. The authors found that remote ischemic preconditioning reduced acute kidney injury in high-risk patients undergoing cardiac surgery. The authors now report on the effects of remote ischemic preconditioning on 90-day outcomes.

Methods: In this follow-up study of the RenalRIP trial, the authors examined the effect of remote ischemic preconditioning on the composite endpoint major adverse kidney events consisting of mortality, need for renal replacement therapy, and persistent renal dysfunction at 90 days. Secondary outcomes were persistent renal dysfunction and dialysis dependence in patients with acute kidney injury.

Results: Remote ischemic preconditioning significantly reduced the occurrence of major adverse kidney events at 90 days (17 of 120 [14.2%]) *versus* control (30 of 120 [25.0%]; absolute risk reduction, 10.8%; 95% CI, 0.9 to 20.8%; $P = 0.034$). In those patients who developed acute kidney injury after cardiac surgery, 2 of 38 subjects in the remote ischemic preconditioning group (5.3%) and 13 of 56 subjects in the control group (23.2%) failed to recover renal function at 90 days (absolute risk reduction, 17.9%; 95% CI, 4.8 to 31.1%; $P = 0.020$). Acute kidney injury biomarkers were also increased in patients reaching the major adverse kidney event endpoint compared to patients who did not.

Conclusions: Remote ischemic preconditioning significantly reduced the 3-month incidence of a composite endpoint major adverse kidney events consisting of mortality, need for renal replacement therapy, and persistent renal dysfunction in high-risk patients undergoing cardiac surgery. Furthermore, remote ischemic preconditioning enhanced renal recovery in patients with acute kidney injury. (**ANESTHESIOLOGY** 2017; 126:787-98)

IN cardiac surgery patients, acute kidney injury (AKI) is associated with an increased risk of short-term adverse outcomes.^{1,2} However, longer-term outcomes for patients with AKI need further attention.^{3,4} Moreover, interventions that reduce AKI after cardiac surgery may not impact long-term outcomes.⁵ Thus, after an episode of AKI, the risks of mortality and of subsequent chronic kidney disease with or without the need for renal replacement therapy remain uncertain. A recently published meta-analysis by Coca *et al.*⁶ reported absolute rates of chronic kidney disease after AKI approximately 50% higher than that of mortality, but the analysis was limited due to high statistical heterogeneity.

The effect of remote ischemic preconditioning (RIPC) on renal function after cardiac surgery has been investigated in the last years, offering conflicting results.⁷⁻⁹ We have recently

What We Already Know about This Topic

- Previous studies have demonstrated that acute kidney injury is associated with an increased risk of short-term adverse outcomes after cardiac surgery
- This study is a follow-up study from the RenalRIP cohort to determine the effects of remote ischemic preconditioning on the 90-day composite endpoint major adverse kidney events consisting of all-cause mortality, the receipt of renal replacement therapy, and persistent renal dysfunction without dialysis

What This Article Tells Us That Is New

- Remote ischemic preconditioning significantly reduced the 3-month incidence of a composite endpoint major adverse kidney events consisting of mortality, need for renal replacement therapy, and persistent renal dysfunction in high-risk patients undergoing cardiac surgery

This article is featured in "This Month in Anesthesiology," page 1A. Corresponding article on page 763. This article has a video abstract.

Submitted for publication October 7, 2016. Accepted for publication January 27, 2017. From the Department of Anaesthesiology, Intensive Care Medicine and Pain Medicine (A.Z., H.V.A., C.S., M.K., M.M.) and Department of Cardiac Surgery (S.M.), University Hospital Münster, Münster, Germany; Center for Critical Care Nephrology, Department of Critical Care Medicine, University of Pittsburgh, Pittsburgh, Pennsylvania (J.A.K.); Department of Anaesthesiology and Intensive Care Medicine, University Hospital Tübingen, Tübingen, Germany (P.R.); and Institute of Biostatistics and Clinical Research, University of Münster, Münster, Germany (D.G.).

Copyright © 2017, the American Society of Anesthesiologists, Inc. Wolters Kluwer Health, Inc. All Rights Reserved. *Anesthesiology* 2017; 126:787-98

published the results of a multicenter, randomized controlled trial investigating the effects of RIPC on the occurrence of AKI in high-risk patients undergoing cardiac surgery and demonstrated that this intervention significantly reduced the rate of AKI and need for renal replacement therapy.⁹ Moreover, we have shown that the effectiveness of this intervention was strongly associated with the release of cell cycle arrest biomarkers into the urine. Patients who responded to RIPC with an increase in urinary tissue inhibitor of metalloproteinases-2 (TIMP-2) and insulin-like growth factor-binding protein 7 (IGFBP7; [TIMP-2]·[IGFBP7]) greater than or equal to 0.5 (ng/ml)²/1,000 before surgery had a significantly reduced rate of AKI compared to patients with lower urinary [TIMP-2]·[IGFBP7]. These same biomarkers predicted AKI when they increased as a result of surgery, as shown previously.^{10–12} However, longer-term outcomes of patients treated with RIPC are unknown.

Here, we report a follow-up study from the RenalRIP cohort to determine the effects of RIPC on the 90-day composite endpoint major adverse kidney events (MAKE) consisting of all-cause mortality, the receipt of renal replacement therapy, and persistent renal dysfunction without dialysis. Documentation of long-term effects of RIPC on renal recovery and other outcomes is important for understanding the biology of this intervention and for patient care.

Materials and Methods

The RenalRIP trial has been described in detail elsewhere.⁹ Briefly, 240 patients at high risk for AKI who underwent cardiac surgery with the use of cardiopulmonary bypass (CPB) were enrolled at four sites in Germany from August 2013 to June 2014. We used a Cleveland Clinic Foundation score of 6 or more to define patients at high risk for AKI.¹³ The score is composed of different risk factors, including patient characteristics, comorbidities, and type of surgery. Patients were randomized on a 1:1 basis stratified by center. On the day of surgery, patients were assigned to undergo either RIPC or sham-RIPC (control) and the intervention was provided by an investigator not involved in the care of the patient. Patients, anesthesiologists and staff providing care of the patient, cardiac surgeons, and intensive care physicians were blinded for treatment assignment. For induction of anesthesia, all patients received sufentanil with either benzodiazepines (Bochum, Freiburg, and Tübingen; 100% in these centers) alone or in combination with barbiturates (Münster; 100% in this center). To maintain anesthesia, a combination of sufentanil and volatile anesthetics was used (sufentanil: all centers, 100% in these centers; isoflurane: Bochum, 100% in this center; sevoflurane: Freiburg, Münster, and Tübingen, 100% in these centers). Propofol was not used due to potential interference with RIPC.¹⁴ None of the patients received regional anesthesia. After induction of anesthesia and before skin incision, we performed RIPC consisting of three cycles of 5-min inflation of a blood pressure cuff to 200 mmHg (or at least to a pressure 50 mmHg higher than the systolic arterial pressure) to one upper arm

followed by 5-min reperfusion with the cuff deflated. In patients assigned to the control group, sham-RIPC intervention was induced by three cycles of upper-limb pseudo-ischemia (*low pressure*: 5-min blood pressure cuff inflation to a pressure of 20 mmHg and 5-min cuff deflation). The surgical procedure and perioperative care were performed according to the standard at each center. According to the recommendations of the American College of Cardiology Foundation (Washington, D.C.) and the Kidney Disease: Improving Global Outcomes (KDIGO; Brussels, Belgium) guidelines, angiotensin-converting enzyme inhibitors (ACEi) and angiotensin-II receptor blockers (ARBs) were discontinued before surgery. Medication was reconvened once the patient was hemodynamically stable. The RenalRIP trial was approved by the institutional review board at each site. All subjects (or legally authorized representatives) provided written informed consent. The trial is registered at <http://www.drks.de> (identifier: DRKS00005333; principal investigator: Dr. Zarbock; registration date: July 11, 2013).

Sample and Data Collection

Blood samples were collected by standard methods before surgery and at prespecified time points after surgery for measurement of serum creatinine concentrations (4 h after cardiac surgery and on every morning for at least 3 days after cardiac surgery). Urine samples for biomarkers were collected before RIPC/sham-RIPC, after inducing RIPC/sham-RIPC, and at 4, 12, and 24 h after surgery. The samples were centrifuged, and urine supernatants and serum were frozen within 2 h after collection and thawed immediately before analysis. All clinical data, including patient demographics, need for renal replacement therapy, length of stay in the intensive care unit, length of stay in the hospital, 30- and 90-day mortality, previous health history, serum creatinine, concentrations of various biomarkers, and hourly urine output, were collected and stored in a password-protected data set.

Clinical Endpoints

The key endpoint of this follow-up analysis MAKE consisting of the composite of death, dialysis, or persistent renal dysfunction at day 90 was determined from hospital records or for patients discharged alive and not on dialysis, telephone calls to the general practitioner, the subject or family members at 3 months after enrollment. The individual components were defined as follows: if the patient died, the mortality endpoint was met but not dialysis dependency or persistent renal dysfunction. If the patient met the dialysis endpoint, the subject was also defined as persistent renal dysfunction. If the persistent renal dysfunction endpoint was met but not the dialysis endpoint, then only persistent renal dysfunction was met. If the subject was determined to have died or been on dialysis at the time of telephone assessment, the date of death or dialysis was recorded. We defined persistent renal dysfunction as serum creatinine levels greater than or equal to 0.5 mg/dl higher than baseline serum creatinine^{15,16} in

patients not receiving dialysis or dialysis dependency. Patients who died within 90 days could not be evaluated for persistent renal dysfunction. This composite endpoint has been recommended because death is a competing endpoint otherwise.¹⁷ AKI status during the first 72 h after enrollment was classified using the KDIGO guidelines on the basis of serum creatinine and urine output.¹⁸ The reference values for serum creatinine were obtained as described previously.⁹

Laboratory Methods

As described previously, urinary TIMP-2 and IGFBP7 were analyzed by investigators not involved in the care of the patient and blinded to clinical data using a clinical immunoassay (NephroCheck Test and ASTUTE140 Meter; Astute Medical, USA).⁹ The ASTUTE140 Meter automatically multiplies the concentrations of the two biomarkers together and divides this product by 1,000 to report a single numerical test result with units of (nanograms per milliliter)/2/1,000 (the units for all [TIMP-2]·[IGFBP7] test values in this report). Urine neutrophil gelatinase-associated lipocalin (NGAL) was measured with a commercially available assay (Dianova, Germany) according to the manufacturer's protocol.

Statistical Analysis

For the parental analysis, we calculated a necessary sample size based on the primary endpoint (occurrence of AKI within 72 h after cardiac surgery) using nQuery Advisor software (Statistical Solutions; version 7). The primary efficacy analysis was intended to show superiority of RIPC in high-risk cardiac surgery patients, applying a two-sided chi-square test on significance level $\alpha=0.05$. Based on an observational study, we performed in a similar patient population¹² the expected AKI rate in the control group treated with sham-RIPC was 50%. The expected absolute risk reduction (ARR) for AKI was 18% based on a published single-center study investigating the effect of RIPC on AKI after cardiac surgery.¹⁹ Resulting from these considerations and a power of 80%, the required sample size was calculated to be 117 evaluable patients per treatment group, *i.e.*, 234 in total. An additional six patients were recruited in order to account for loss to follow-up or nonevaluable data.

Here, we describe the statistical methods that were selected to analyze the secondary outcomes of the RenalRIP trial (preplanned analyses) and the composite outcome variable MAKE at day 90. Continuous variables are described by mean \pm SD in case of normally distributed data and as median (Q1 to Q3) in case of skewed data. Categorical variables are described by absolute and relative frequencies. Differences between groups are reported as ARR and its corresponding 95% CI. The key outcome parameter of this analysis (MAKE at day 90) as well as the other secondary outcomes (persistent renal dysfunction, dialysis, and mortality) were analyzed by chi-square test to test for association with the treatment group (RIPC *vs.* Sham-RIPC). If assumptions for the chi-square test were not fulfilled, Fisher exact

test was applied. For these analyses, odds ratios (OR) and 95% CI are reported. To assess the sensitivity of the results, we defined persistent renal dysfunction as serum creatinine increase of 50% or more compared to baseline value or dialysis dependency. Additionally, to evaluate the treatment effect under consideration of the recruiting centers, we applied the Cochran–Mantel–Haenszel (CMH) test. Mortality was also analyzed by time-to-event methods, *i.e.*, Kaplan–Meier plots and Cox proportional hazards model.

For all outcomes, adjusted ORs and corresponding 95% CIs were estimated in a logistic regression model containing the treatment group, age, gender, and chronic kidney disease status. The variables examined in the regression model were selected because these are known to be associated with the development of AKI.¹³ Biomarker measurements were analyzed at each time point individually using Mann–Whitney U tests to compare the treatment groups. Receiver operator characteristic (ROC) curve analysis was applied to assess a biomarker's predictive performance with respect to MAKE prediction at day 90. As a result, the area under the ROC curve (AUC) and its 95% CI were reported. AUCs were tested against the null hypothesis H_0 : AUC = 0.5. Cutpoints for selected time points were determined by maximizing the Youden index: $\max(\text{sensitivity} + \text{specificity} - 1)$.^{20,21}

For all statistical tests, a significance level of 5% was assumed and no correction for the multiple testing problem was applied. The results are thus interpreted as to generate new hypotheses. Analyses were performed using SPSS 22 (IBM Corp., USA, Released 2013; IBM SPSS Statistics for Windows, version 22.0) and the SAS software 9.4 (SAS Institute Inc., USA).

Results

In total, 240 subjects were enrolled in the RenalRIP study, and for this analysis, no subjects were excluded as illustrated in figure 1. In our previous article,⁹ we have shown the demographic and operative characteristics of the patients in the control and intervention groups. Table 1 describes the demographic and operative data of MAKE-positive patients *versus* MAKE-negative patients. Full 3-month outcome was known for 240 (100% of the initial cohort) patients, with 47 (19.6%) patients meeting the endpoint of MAKE and 193 (80.4%) patients not meeting the endpoint MAKE at day 90. Patients with MAKE at day 90 were more likely to be older ($P = 0.002$); the number of patients with congestive heart failure and ACEi or ARBs was higher in the group ($P = 0.018$ and $P = 0.024$, respectively) and showed higher rates of major postoperative bleeding ($P = 0.009$). In addition, appendix A1 shows the demographic and operative data stratified by Sham-RIPC and RIPC.

RIPC significantly reduced the occurrence of MAKE at day 90 (17 of 120 [14.2%]) compared with Sham-RIPC (30 of 120 [25.0%]; ARR, 10.8%; 95% CI, 0.9 to 20.8%; $P = 0.034$; table 2). Considering the different components of the composite endpoint, persistent renal dysfunction (ARR, 12.7%;

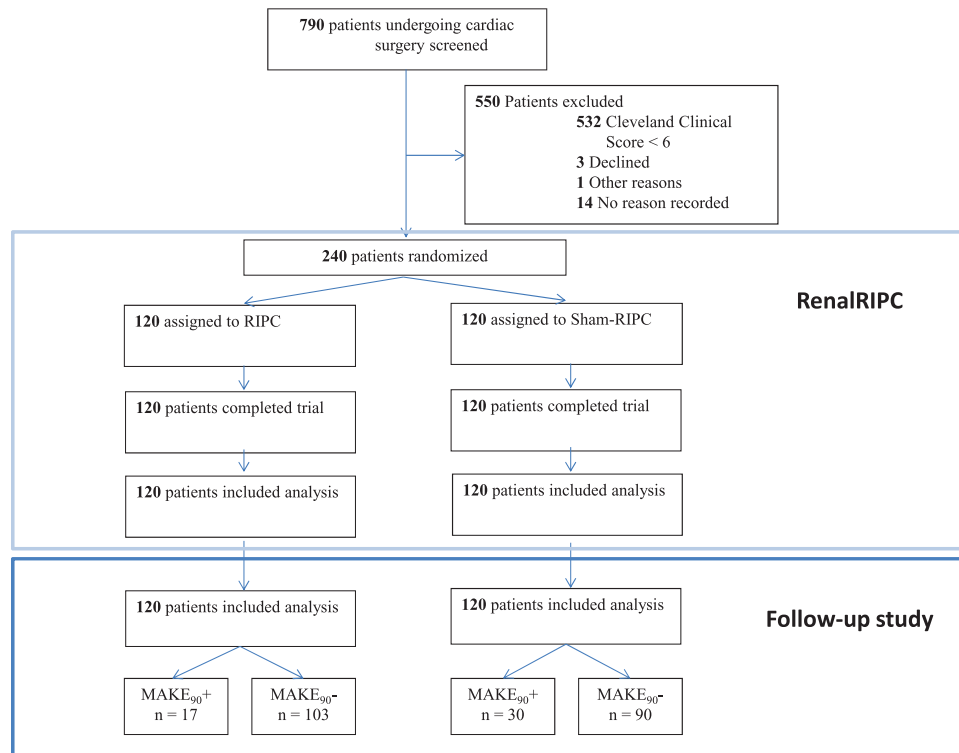


Fig. 1. Patient enrollment and allocation to the remote ischemic preconditioning (RIPC) and control (Sham-RIPC) arms. The first part (light blue box) shows the recruitment of the initial RenalRIP trial,⁹ while the second part (dark blue box) shows the analyzed cohort of this follow-up analysis. MAKE₉₀⁺ = patients meeting the endpoint major adverse kidney events; MAKE₉₀⁻ = patients not meeting the endpoint major adverse kidney events.

OR, 0.262; 95% CI, 0.101 to 0.681; $P = 0.004$; table 2) and renal replacement therapy (ARR, 7.2%; OR, 0.311; 95% CI, 0.097 to 0.997; $P = 0.040$; table 2; fig. 2A) were significantly higher in the Sham-RIPC group than in the RIPC group. Sensitivity analyses using the modified definition of persistent renal dysfunction (persistent elevation of serum creatinine greater than or equal to 50% of baseline) also demonstrated significant results (ARR, 9.8%; 95% CI, 1.40 to 18.21%; $P = 0.024$). Mortality was similar in both groups (RIPC 9.2% *vs.* Sham-RIPC 8.3%; $P = 0.819$; table 2; fig. 2B). We repeated the analysis of outcomes stratified by center and found no differences compared to the unstratified analyses (MAKE at day 90: OR, 0.502; 95% CI, 0.261 to 0.964; $P_{CMH} = 0.035$; persistent renal dysfunction at day 90: OR, 0.263; 95% CI, 0.101 to 0.682; $P_{CMH} = 0.003$; renal replacement therapy at day 90: OR, 0.297; 95% CI, 0.092 to 0.961; $P_{CMH} = 0.034$) demonstrating homogeneous treatment outcome.

In the 108 of 240 (45%) patients who developed AKI after cardiac surgery (RIPC 45 [37.5%] *vs.* Sham-RIPC 63 [52.5%]), 2 of 38 subjects in the RIPC group (5.3%) and 13 of 56 subjects in the Sham-RIPC group (23.2%) failed to recover renal function by day 90 (ARR, 17.9%; 95% CI, 4.8 to 31.1%; $P = 0.020$; table 2). We observed a reduced dependence on renal replacement therapy in the RIPC group (one patient [2.6%]) compared to that in the Sham-RIPC group (eight patients [14.3%]) within 90 days after randomization (ARR, 11.7%; 95% CI, 1.2 to 22.1%; $P = 0.079$). Mortality

was similar in both groups (RIPC: 15.6% *vs.* Sham-RIPC: 11.1%; $P = 0.498$).

The effect of RIPC *versus* Sham-RIPC was confirmed in a logistic regression analysis adjusted for age, gender, and chronic kidney disease (MAKE at day 90: OR, 0.505; 95% CI, 0.258 to 0.988; $P = 0.046$; persistent renal dysfunction at day 90: OR, 0.258; 95% CI, 0.098 to 0.678; $P = 0.006$; renal replacement therapy at day 90: OR, 0.306; 95% CI, 0.094 to 0.991; $P = 0.048$; and mortality at day 90: OR, 1.179; 95% CI, 0.472 to 2.948; $P = 0.724$; table 3).

As shown previously,⁹ baseline urinary [TIMP-2]·[IGFBP7] tested immediately before RIPC or Sham-RIPC did not differ between the 2 groups ($P = 0.33$). Urinary [TIMP-2]·[IGFBP7] tested 4 h after CPB was significantly higher in patients meeting the endpoint (MAKE-negative patients: 0.57 [ng/ml]²/1,000; MAKE-positive patients: 1.01 [ng/ml]²/1,000; $P = 0.021$). A ROC analysis for MAKE at day 90 demonstrated best performance for [TIMP-2]·[IGFBP7] at 4 h (AUC, 0.641; 95% CI, 0.546 to 0.736; $P = 0.004$) and 12 h (AUC, 0.623; 95% CI, 0.515 to 0.731; $P = 0.026$) after cardiac surgery (tables 4 and 5). The same was true for urinary NGAL levels (tables 4 and 5). The AUCs for the combination of [TIMP-2]·[IGFBP7] with NGAL at the different time points were not different ($P > 0.05$). The sensitivity, specificity, Youden index, and cutoff points for the 4- and 12-h time points after cardiac surgery were calculated, as shown in tables 4 and

Table 1. Characteristics of Patient Cohort

	MAKE ₉₀ ⁺ (n = 47)	MAKE ₉₀ ⁻ (n = 193)	P Value
Age, yr, mean (SD)	73.9 (7.8)	69.5 (9.7)	0.002
Male, n (%)	28 (59.6)	123 (63.7)	0.597
ASA grade, n (%)			0.321
1	0 (0)	0 (0)	
2	11 (23.4)	40 (20.7)	
3	31 (66.0)	143 (74.1)	
4	5 (10.6)	10 (5.2)	
CCF score, median (Q1–Q3), points*	6 (6–6)	6 (6–6)	0.551
Preoperative creatinine, mean (SD), mg/dl	1.3 (0.5)	1.1 (0.4)	0.076
eGFR, mean (SD), ml/min per 1.73 m ²	52.4 (12.4)	57.6 (15.0)	0.027
Creatinine day 90, mean (SD), mg/dl	1.7 (0.8)	1.1 (0.4)	< 0.001
Comorbidities, n (%)			
Hypertension	46 (97.9)	186 (96.4)	1†
Congestive heart failure	45 (95.7)	158 (81.9)	0.018
Diabetes	18 (38.3)	72 (37.3)	0.900
COPD	14 (29.8)	62 (32.1)	0.757
Chronic kidney disease	19 (40.4)	55 (28.5)	0.112
Previous heart surgery	7 (14.9)	20 (10.4)	0.378
Medication, n (%)			
Aspirin	27 (57.4)	116 (60.1)	0.739
Clopidogrel	4 (8.5)	22 (11.4)	0.568
β blockers	34 (72.3)	112 (58.0)	0.072
Statins	36 (76.6)	129 (66.8)	0.196
Diuretics	30 (63.8)	104 (53.9)	0.218
ACEi or ARBs	35 (74.5)	109 (56.5)	0.024
Operative characteristics, n (%)			
Aortic cross-clamp duration, median (Q1–Q3), min	89 (63–120)	84 (60–110)	0.371
Cardiopulmonary bypass time, median (Q1–Q3), min	120 (90–175)	121 (90–178)	0.525
CABG only	15 (31.9)	65 (33.7)	0.818
Valve only	6 (12.8)	43 (22.3)	0.147
Combined or other	26 (55.3)	85 (44.0)	0.164
Postoperative complications, n (%)			
Myocardial infarction	3 (6.7)	8 (4.1)	0.468
Major bleeding	13 (28.9)	25 (13.0)	0.009
Cerebral insult	1 (2.2)	4 (2.1)	0.950
Cerebral hemorrhage	0 (0)	0 (0)	
Pulmonary embolism	0 (0)	0 (0)	

Demographic and operative data of patients meeting major adverse kidney event (MAKE₉₀⁺) versus patients not meeting major adverse kidney event (MAKE₉₀⁻) at day 90.

*Cleveland Clinic Foundation (CCF) score (0 to 17 points) is composed of 13 preoperative risk factors, comorbidities, and type of surgery. A higher number correlates with a higher rate of dialysis-dependent acute kidney injury after cardiac surgery (Thakar *et al.*¹³). †Fisher exact test.

ACEi = angiotensin-converting enzyme inhibitors; ARB = angiotensin-II receptor blockers; ASA = American Society of Anesthesiology grade (grade 5 patients were not included); CABG = coronary artery bypass graft; COPD = chronic obstructive pulmonary disease; eGFR = estimated glomerular filtration rate.

5. Combining [TIMP-2]·[IGFBP7] with NGAL did not demonstrate superior predictive value for MAKE at day 90 compared to one marker alone (appendix A2).

Next, we assessed the relationship between urinary bio-marker concentrations 4, 12, and 24 h after CPB and persistent renal dysfunction at day 90 (table 6). For [TIMP-2]·[IGFBP7], the AUC for the 4- and 12-h time points were 0.692 (95% CI, 0.563 to 0.821; *P* = 0.004) and 0.677 (95% CI, 0.523 to 0.831; *P* = 0.024), respectively (table 6). The AUC for the composite time point was 0.696 (95% CI, 0.555 to 0.836; *P* = 0.006). Similar results were obtained for NGAL (table 6). The ROC curves for the combination of [TIMP-2]·[IGFBP7] with NGAL at the different time points were not different

(*P* > 0.05). Combining [TIMP-2]·[IGFBP7] with NGAL did not improve the precision for persistent renal dysfunction at day 90 compared to one marker alone (appendix A3).

Discussion

The results of this follow-up of the randomized controlled clinical RenalRIP trial⁹ show that RIPC improves short- as well as long-term outcomes of high-risk patients undergoing cardiac surgery.

In recent years, several studies investigating the effects of RIPC have been published with variable results. In contrast to studies showing a positive effect of RIPC on the heart and kidney,^{9,19,22} several studies were unable to demonstrate that RIPC

Table 2. Outcomes of Patients by the Treatment Group

	n	Sham-RIPC	RIPC	P Value	ARR % (95% CI)	OR/HR* (95% CI)
All patients						
MAKE ₉₀ , n (%)	120/120	30 (25.0)	17 (14.2)	0.034	10.8 (0.9–20.8)	0.495 (0.256–0.957)
PRD ₉₀ , n (%)	110/109	20 (18.2)	6 (5.5)	0.004	12.7 (4.3–21.1)	0.262 (0.101–0.681)
RRT ₉₀ , n (%)	110/109	12 (10.9)	4 (3.7)	0.040	7.2 (0.4–14.1)	0.311 (0.097–0.997)
Mortality ₉₀ , n (%)	120/120	10 (8.3)	11 (9.2)	0.819	–0.8 (–8.0 to 6.3)	1.127* (0.458–2.775)
28-day survival, % (95% CI)		96.6 (91.1–98.7)	94.9 (89.0–97.7)	0.795		
Length of hospital stay after surgery, median (Q1–Q3)	110/106	10 (8–16)	9 (7–14)	0.615†		
Patients with AKI						
MAKE ₉₀ , n (%)	63/45	20 (31.8)	9 (20.0)	0.175	11.8 (–4.7 to 28.1)	0.538 (0.218–1.326)
PRD ₉₀ , n (%)	56/38	13 (23.2)	2 (5.3)	0.020	17.9 (4.8–31.1)	0.184 (0.039–0.869)
RRT ₉₀ , n (%)	56/38	8 (14.3)	1 (2.6)	0.079‡	11.7 (1.2–22.1)	0.162 (0.019–1.354)
Mortality ₉₀ , n (%)	63/45	7 (11.1)	7 (15.6)	0.498	–4.4 (–17.6 to 8.7)	1.193* (0.401–3.550)
28-day survival, % (95% CI)		93.4 (83.5–97.5)	91.1 (78.0–96.6)	0.751		
Length of hospital stay after surgery, median (Q1–Q3)	56/38	10 (8–21)	10 (9–18)	0.841†		

Odds ratios (ORs) and hazard ratios (HRs) quantify the acute kidney injury (AKI) risk of remote ischemic preconditioning (RIPC) as compared to sham (reference).

*Excluding patients who died. †Mann–Whitney U test. ‡Fisher exact test was used due to expected counts less than 5 in the cross-table.

ARR = absolute risk reduction for RIPC; MAKE₉₀ = major adverse kidney events within 90 days; PRD₉₀ = persistent renal dysfunction at day 90; RRT₉₀ = dialysis dependence within 90 days.

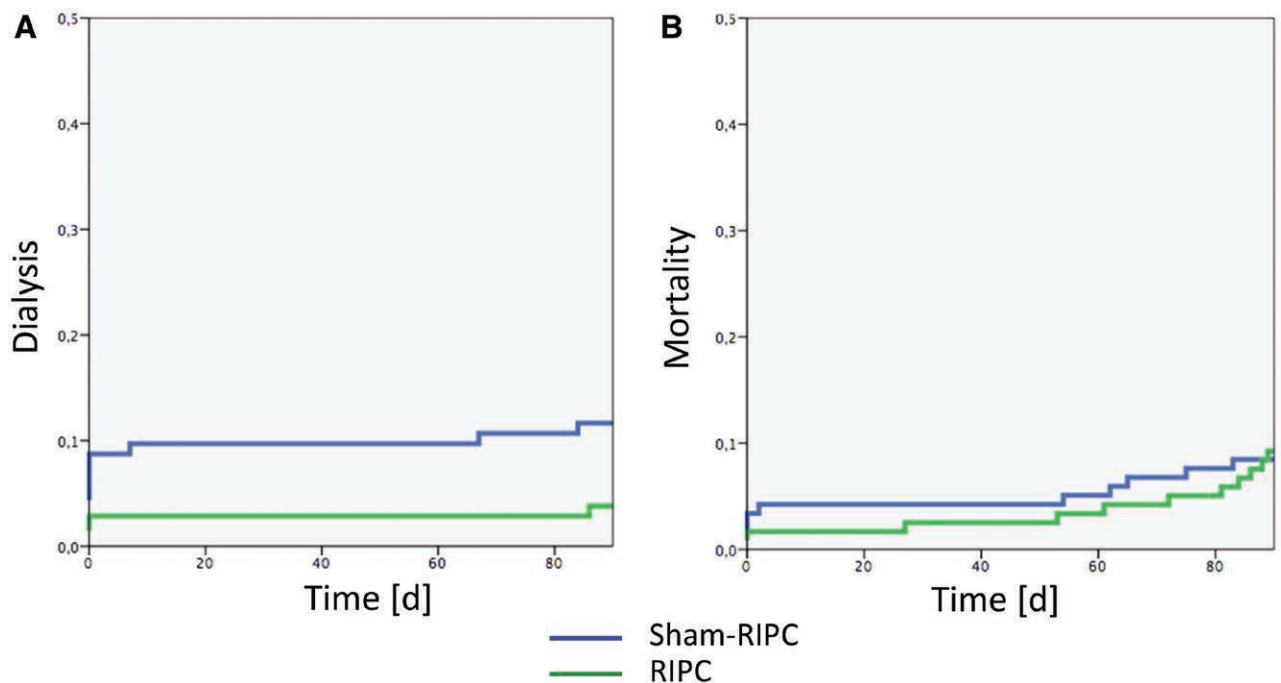


Fig. 2. Kaplan–Meier curves for dialysis (A) and death (B) within 90 days after study enrollment. Cumulative dialysis or death within 90 days for control (Sham-RIPC; blue line) or remote ischemic preconditioning (RIPC) patients (green line). (A) log-rank $P = 0.040$, (B) log-rank $P = 0.849$.

can affect organ function, complications, or mortality.^{7,8,23,24} Two recently published large multicenter trials investigating more than 3,000 patients demonstrated that RIPC did not affect either composite endpoints or mortality.^{7,8} These results might be explained by differences in study design. Applying RIPC in high-risk patients reduced AKI,⁹ whereas the use of this same intervention in low-risk patients had no effect on

myocardial infarction, occurrence of AKI, or mortality.^{7,8} Another very important difference between the studies, which might explain the different results, is the anesthetic regime during surgery. It has been shown that propofol can affect the effects of RIPC.¹⁴ In the two recently published multicenter trials, the vast majority of patients received propofol for anesthesia, which could have diminished or abrogated the effect of

Table 3. Logistic Regression Analysis

Outcome Parameter	Adjusted OR (95% CI)	P Value
AKI	0.547 (0.326–0.919)	0.023
Moderate/severe AKI	0.443 (0.227–0.868)	0.018
MAKE ₉₀	0.505 (0.258–0.988)	0.046
PRD ₉₀	0.258 (0.098–0.678)	0.006
RRT ₉₀	0.306 (0.094–0.991)	0.048
Mortality ₉₀	1.179 (0.472–2.948)	0.724
Survival	HR: 1.212 (0.488–3.008)	0.678

Bold P values are considered statistically significant. Adjusted odds ratios (OR) for the effect of remote ischemic preconditioning versus Sham on the selected outcome parameters. Adjustment has been performed for age, gender, and chronic kidney disease status.

AKI = acute kidney injury; HR = hazard ratio; MAKE₉₀ = major adverse kidney events within 90 days; Mortality₉₀ = mortality at day 90; PRD₉₀ = persistent renal dysfunction at day 90; RRT₉₀ = dialysis dependence within 90 days.

RIPC. In our trial, we specifically avoided propofol and found that RIPC significantly reduced the occurrence of MAKE at day 90 compared to sham. Furthermore, in patients who nevertheless developed AKI after surgery, RIPC significantly improved renal recovery as seen by lower rates of renal replacement therapy and persistent renal dysfunction.

Surgical patients commonly experience postoperative increases in creatinine levels. A recently published trial suggests that even small increases (Δ creatinine 25 to 49% above baseline but less than 0.3 mg/dl) in postoperative creatinine levels are associated with adverse outcomes.²⁵ This was more pronounced in noncardiac surgery patients. These results suggest that RIPC might be an effective therapeutic approach to prevent even mild forms of postoperative kidney dysfunction and to improve surgical outcomes. Moreover, one could raise the concern of ACEi and ARBs influencing the effects of RIPC. The same number of patients in the control and RIPC groups received ACEi or ARBs (60.8 vs. 59.2%, respectively; $P > 0.05$). ACEi and ARBs were discontinued before surgery, and according to the recommendations of the American College of Cardiology Foundation²⁶ and the KDIGO guidelines,¹⁸ patients received ACEi or ARBs after they became hemodynamically stable. Due to the preoperative discontinuation of the ACEi and ARBs, it is unlikely that these drugs potentiated the effects of RIPC.

The mechanisms responsible for the benefit of RIPC are not completely understood. Recent evidence suggests that *in situ* preconditioning induces activation of cardiac hypoxia-inducible factor (HIF)-1 α . *In vivo* small interfering RNA repression of cardiac HIF-1 α resulted in abolished cardioprotection by ischemic preconditioning.²⁷ Another study demonstrated that HIF-1 activates interleukin (IL)-10 gene transcription and is required for RIPC.²⁸ Our recently published data suggest that RIPC induces the release of damage-associated molecular patterns from the ischemic tissue and that these molecules may engage self-protective mechanisms in the kidney such as cell cycle arrest.⁹

Biomarkers may further aid in the interpretation of results from interventional trials. Coca *et al.*²⁹ have recently shown that several AKI biomarkers measured in the perioperative period after cardiac surgery correlated with long-term mortality. The authors of the Translational Research Investigating Biomarker Endpoints in AKI study demonstrated that, compared with the first tertiles, the third tertiles of peak biomarker percentages of urinary kidney injury molecule-1, NGAL, liver fatty acid binding protein, IL-18, and albumin were all associated with a significantly increased risk of mortality in those subjects who developed AKI after surgery. This effect was also significant for IL-18 and kidney injury molecule-1 in patients without AKI. Both IGFBP7 and TIMP-2 are involved with the phenomenon of G₁ cell cycle arrest during the very early phases of cell injury. Importantly, both TIMP-2 and IGFBP7 may increase in response to a wide variety of insults (inflammation, oxidative stress, ultraviolet radiation, drugs, and toxins).^{30–32} The results of several studies of urinary [TIMP-2]·[IGFBP7] demonstrated that these markers enable early diagnosis and risk stratification of AKI in a wide range of critically ill patients.^{10,12} In terms of timing, this signal represents an early point of cellular stress. Biomarkers that can detect cellular stress may be more useful than markers of injury or cell death. These elevations are independent of the presence of other chronic conditions such as chronic kidney disease.³³ Moreover, there is growing evidence that damage markers may play an important role in the progression of AKI to maladaptive repair resulting in progression of fibrosis to chronic kidney disease.^{34,35} A recently published study showed that [TIMP-2]·[IGFBP7] measured

Table 4. Receiver Operating Characteristic Analysis for Major Adverse Kidney Events at Day 90

	N	N ⁺	N ⁻	AUC (95% CI)	P Value	N	N ⁺	N ⁻	AUC (95% CI)	P Value
Urinary [TIMP-2]·[IGFBP7]										
Preintervention	237	46	191	0.592 (0.503–0.682)	0.044	232	47	185	0.585 (0.501–0.668)	0.048
Postintervention	231	46	185	0.541 (0.453–0.630)	0.363	230	46	184	0.605 (0.519–0.691)	0.017
4-h post-CPB	214	44	170	0.641 (0.546–0.736)	0.004	222	47	175	0.617 (0.522–0.713)	0.016
12-h post-CPB	230	44	186	0.623 (0.515–0.731)	0.026	227	45	182	0.618 (0.524–0.713)	0.014
24-h post-CPB	230	45	185	0.539 (0.433–0.645)	0.476	224	46	178	0.585 (0.493–0.677)	0.070
Composite	238	46	192	0.617 (0.513–0.721)	0.028	232	47	185	0.639 (0.547–0.731)	0.003

AUC = area under the receiver operator characteristics curve; CPB = cardiopulmonary bypass; IGFBP7 = insulin-like growth factor-binding protein 7; N = all patients; N⁺ = patients with positive major adverse kidney events at day 90; N⁻ = patients with negative major adverse kidney events at day 90; TIMP-2 = tissue inhibitor of metalloproteinases-2.

Table 5. Evaluation of Cutoff Values for Urinary [TIMP-2]·[IGFBP7] and Urinary NGAL

Cutoff Values	Urinary [TIMP-2]·[IGFBP7]				Urinary NGAL			
	Cutoff	Youden Index	Sensitivity	Specificity	Cutoff	Youden Index	Sensitivity	Specificity
Preintervention	0.38	0.20	0.78	0.41	4.67	0.22	0.94	0.28
Postintervention	0.83	0.14	0.87	0.27	4.09	0.23	0.94	0.30
4-h post-CPB	0.36	0.28	0.57	0.71	51.95	0.22	0.55	0.66
12-h post-CPB	0.68	0.32	0.50	0.82	15.24	0.26	0.67	0.59
Composite	0.86	0.29	0.54	0.75	483.81	0.24	0.34	0.90

CPB = cardiopulmonary bypass; IGFBP7 = insulin-like growth factor-binding protein; NGAL = neutrophil gelatinase-associated lipocalin; TIMP-2, tissue inhibitor of metalloproteinases-2.

Table 6. Receiver Operating Characteristic Analysis for Persistent Renal Dysfunction at Day 90

	Urinary [TIMP-2]·[IGFBP7]					Urinary NGAL				
	N	N ⁺	N ⁻	AUC (95% CI)	P Value	N	N ⁺	N ⁻	AUC (95% CI)	P Value
Preintervention	93	15	78	0.614 (0.470–0.757)	0.121	89	15	74	0.551 (0.411–0.690)	0.478
Postintervention	91	15	76	0.533 (0.373–0.694)	0.684	88	14	74	0.511 (0.368–0.654)	0.879
4-h post CPB	87	15	72	0.692 (0.563–0.821)	0.004	88	15	73	0.657 (0.494–0.819)	0.059
12-h post CPB	92	15	77	0.677 (0.523–0.831)	0.024	85	13	72	0.573 (0.403–0.742)	0.401
24-h post CPB	89	14	75	0.444 (0.268–0.620)	0.535	84	14	70	0.487 (0.311–0.664)	0.887
Composite	94	15	79	0.696 (0.555–0.836)	0.006	89	15	74	0.648 (0.478–0.818)	0.088

AUC = area under the curve; CPB = cardiopulmonary bypass; IGFBP7 = insulin-like growth factor-binding protein; N = all acute kidney injury patients; N⁺ = all acute kidney injury patients with positive persistent renal dysfunction at day 90; N⁻ = all acute kidney injury patients with negative persistent renal dysfunction at day 90; NGAL = neutrophil gelatinase-associated lipocalin; TIMP-2 = tissue inhibitor of metalloproteinases-2.

in critically ill patients after intensive care unit admission similarly correlated with long-term outcomes.³⁶ However, this subgroup analysis clearly demonstrated that the signal detected by [TIMP-2]·[IGFBP7] is highly specific to AKI.³⁶ In line with these results, we here demonstrated that [TIMP-2]·[IGFBP7] in the urine immediately after surgery correlates with long-term outcomes but larger randomized controlled trials will have to confirm these findings. However, unlike previous studies, we found that the effects on MAKE at day 90 were not limited to patients manifesting AKI.

Our study has a number of strengths, including the prospective nature of the study together with the scale and completeness of long-term follow-up. Our design allows for greater precision in estimates of absolute risk and increases the clinical applicability of the findings while avoiding potential bias from retrospective selection of the study cohort. In addition, clinical and biochemical outcomes were available for all patients, and data linkage has allowed a complete follow-up of mortality, need for renal replacement therapy, and persistent renal dysfunction. However, a limitation of such a study design is that the findings from a randomized trial are not always generalizable to other patient populations, so caution should be applied in translating these findings from high-risk patients undergoing cardiac surgery to patients undergoing another procedure. Moreover, our measure of kidney dysfunction is limited to serum creatinine at day 90 after surgery. More precise and repeated measures of glomerular filtration rate and possibly biomarkers of kidney damage or assessment of renal reserve may have unmasked further evidence of kidney pathology.

In addition, future studies will need to address the optimal methods for RIPC and whether benefits are consistent across patients with varying risks for AKI defined by either clinical criteria (such as those with preexisting chronic kidney disease or with lower Cleveland Clinical Foundation score) or use of biomarkers. Although we demonstrated that RIPC significantly reduced MAKE, we did not detect a reduction in mortality between the two groups at days 30 and 90 after cardiac surgery. Given the low mortality rates, however, in order to detect a difference in long-term mortality between groups, we would need to analyze more than 10,000 patients. It remains to be determined whether preventing cardiac surgery-associated AKI using RIPC will improve long-term kidney function and outcome, but the effects shown here, especially on dialysis use at 90 days, are encouraging. In conclusion, RIPC significantly improved renal function in high-risk patients undergoing cardiac surgery by reducing prolonged renal dysfunction and need for renal replacement therapy at day 90. Furthermore, the intervention also reduced the 3-month incidence of the composite endpoint MAKE at day 90 without affecting the all-cause mortality. In addition, RIPC not only reduced the severity of AKI but also enhanced renal recovery in those patients who developed AKI.

Research Support

Supported by grant Nos. ZA428/6-1 and ZA428/10-1 from the German Research Foundation (Bonn, Germany; to Dr. Zarbock) and by grant No. 2016_A97 from the Else Kröner Fresenius Stiftung (Bad Homburg, Germany).

Competing Interests

Dr. Zarbock and Dr. Kellum have received grant support and lecture fees from Astute Medical (San Diego, California), unrelated to the current study. Dr. Zarbock and Dr. Kellum have filed a patent application on the use of the biomarkers together with remote ischemic preconditioning. Dr. Meersch has received lecture fees from Astute Medical (San Diego, California), unrelated to the current study. The other authors declare no competing interests.

Reproducible Science

Full protocol available at: zarbock@uni-muenster.de. Raw data available at: zarbock@uni-muenster.de.

Correspondence

Address correspondence to Dr. Zarbock: Department of Anesthesiology, Critical Care Medicine and Pain Therapy, University Hospital Münster, Albert-Schweitzer-Campus 1, Gebäude A1, 48149 Münster, Germany. zarbock@uni-muenster.de. This article may be accessed for personal use at no charge through the Journal Web site, www.anesthesiology.org.

References

- Thakar CV, Worley S, Arrigain S, Yared JP, Paganini EP: Improved survival in acute kidney injury after cardiac surgery. *Am J Kidney Dis* 2007; 50:703–11
- Rosner MH, Okusa MD: Acute kidney injury associated with cardiac surgery. *Clin J Am Soc Nephrol* 2006; 1:19–32
- Wald R, Quinn RR, Luo J, Li P, Scales DC, Mamdani MM, Ray JG; University of Toronto Acute Kidney Injury Research Group: Chronic dialysis and death among survivors of acute kidney injury requiring dialysis. *JAMA* 2009; 302:1179–85
- Lo LJ, Go AS, Chertow GM, McCulloch CE, Fan D, Ordoñez JD, Hsu CY: Dialysis-requiring acute renal failure increases the risk of progressive chronic kidney disease. *Kidney Int* 2009; 76:893–9
- Garg AX, Devereaux PJ, Yusuf S, Cuerden MS, Parikh CR, Coca SG, Walsh M, Novick R, Cook RJ, Jain AR, Pan X, Noiseux N, Vik K, Stolf NA, Ritchie A, Favaloro RR, Parvathaneni S, Whitlock RP, Ou Y, Lawrence M, Lamy A; CORONARY Investigators: Kidney function after off-pump or on-pump coronary artery bypass graft surgery: A randomized clinical trial. *JAMA* 2014; 311:2191–8
- Coca SG, Singanamala S, Parikh CR: Chronic kidney disease after acute kidney injury: A systematic review and meta-analysis. *Kidney Int* 2012; 81:442–8
- Hausenloy DJ, Candilio L, Evans R, Ariti C, Jenkins DP, Kolvekar S, Knight R, Kunst G, Laing C, Nicholas J, Pepper J, Robertson S, Xenou M, Clayton T, Yellon DM; ERICCA Trial Investigators: Remote ischemic preconditioning and outcomes of cardiac surgery. *N Engl J Med* 2015; 373:1408–17
- Meybohm P, Bein B, Brosteanu O, Cremer J, Gruenewald M, Stoppe C, Coburn M, Schaele G, Böning A, Niemann B, Roesner J, Kletz F, Strouhal U, Reyher C, Laufenberg-Feldmann R, Ferner M, Brandes IF, Bauer M, Stehr SN, Kortgen A, Wittmann M, Baumgarten G, Meyer-Treschan T, Kienbaum P, Heringlake M, Schön J, Sander M, Treskatsch S, Smul T, Wolwender E, Schilling T, Fuernau G, Hasenclever D, Zacharowski K; RIPHeart Study Collaborators: A multicenter trial of remote ischemic preconditioning for heart surgery. *N Engl J Med* 2015; 373:1397–407
- Zarbock A, Schmidt C, Van Aken H, Wempe C, Martens S, Zahn PK, Wolf B, Goebel U, Schwer CI, Rosenberger P, Haeberle H, Görllich D, Kellum JA, Meersch M; RenalRIPC Investigators: Effect of remote ischemic preconditioning on kidney injury among high-risk patients undergoing cardiac surgery: a randomized clinical trial. *JAMA* 2015; 313:2133–41
- Kashani K, Al-Khafaji A, Ardiles T, Artigas A, Bagshaw SM, Bell M, Bihorac A, Birkhahn R, Cely CM, Chawla LS, Davison DL, Feldkamp T, Forni LG, Gong MN, Gunnerson KJ, Haase M, Hackett J, Honore PM, Hoste EA, Joannes-Boyau O, Joannidis M, Kim P, Koyner JL, Laskowitz DT, Lissauer ME, Marx G, McCullough PA, Mullaney S, Ostermann M, Rimmelé T, Shapiro NI, Shaw AD, Shi J, Sprague AM, Vincent JL, Vinsonneau C, Wagner L, Walker MG, Wilkerson RG, Zacharowski K, Kellum JA: Discovery and validation of cell cycle arrest biomarkers in human acute kidney injury. *Crit Care* 2013; 17:R25
- Bihorac A, Chawla LS, Shaw AD, Al-Khafaji A, Davison DL, Demuth GE, Fitzgerald R, Gong MN, Graham DD, Gunnerson K, Heung M, Jortani S, Kleerup E, Koyner JL, Krell K, Letourneau J, Lissauer M, Miner J, Nguyen HB, Ortega LM, Self WH, Sellman R, Shi J, Straseski J, Szalados JE, Wilber ST, Walker MG, Wilson J, Wunderink R, Zimmerman J, Kellum JA: Validation of cell-cycle arrest biomarkers for acute kidney injury using clinical adjudication. *Am J Respir Crit Care Med* 2014; 189:932–9
- Meersch M, Schmidt C, Van Aken H, Martens S, Rossaint J, Singbartl K, Görllich D, Kellum JA, Zarbock A: Urinary TIMP-2 and IGFBP7 as early biomarkers of acute kidney injury and renal recovery following cardiac surgery. *PLoS One* 2014; 9:e93460
- Thakar CV, Arrigain S, Worley S, Yared JP, Paganini EP: A clinical score to predict acute renal failure after cardiac surgery. *J Am Soc Nephrol* 2005; 16:162–8
- Kottenberg E, Thielmann M, Bergmann L, Heine T, Jakob H, Heusch G, Peters J: Protection by remote ischemic preconditioning during coronary artery bypass graft surgery with isoflurane but not propofol - A clinical trial. *Acta Anaesthesiol Scand* 2012; 56:30–8
- Kellum JA: How can we define recovery after acute kidney injury? Considerations from epidemiology and clinical trial design. *Nephron Clin Pract* 2014; 127:81–8
- Palevsky PM, Zhang JH, O'Connor TZ, Chertow GM, Crowley ST, Choudhury D, Finkel K, Kellum JA, Paganini E, Schein RM, Smith MW, Swanson KM, Thompson BT, Vijayan A, Watnick S, Star RA, Peduzzi P: Intensity of renal support in critically ill patients with acute kidney injury. *N Engl J Med* 2008; 359: 7–20
- Palevsky PM, Molitoris BA, Okusa MD, Levin A, Waikar SS, Wald R, Chertow GM, Murray PT, Parikh CR, Shaw AD, Go AS, Faubel SG, Kellum JA, Chinchilli VM, Liu KD, Cheung AK, Weisbord SD, Chawla LS, Kaufman JS, Devarajan P, Toto RM, Hsu CY, Greene T, Mehta RL, Stokes JB, Thompson AM, Thompson BT, Westenfeller CS, Tumlin JA, Warnock DG, Shah SV, Xie Y, Duggan EG, Kimmel PL, Star RA: Design of clinical trials in acute kidney injury: Report from an NIDDK workshop on trial methodology. *Clin J Am Soc Nephrol* 2012; 7:844–50
- KDIGO AKI Work Group: KDIGO clinical practice guideline for acute kidney injury. *Kidney Int Suppl* 2012; 2:1–138
- Zimmerman RF, Ezeanuna PU, Kane JC, Cleland CD, Kempnanjappa TJ, Lucas FL, Kramer RS: Ischemic preconditioning at a remote site prevents acute kidney injury in patients following cardiac surgery. *Kidney Int* 2011; 80:861–7
- Youden WJ: Index for rating diagnostic tests. *Cancer* 1950; 3:32–5
- Fluss R, Faraggi D, Reiser B: Estimation of the Youden Index and its associated cutoff point. *Biom J* 2005; 47:458–72
- Thielmann M, Kottenberg E, Kleinbongard P, Wendt D, Gedik N, Pasa S, Price V, Tsagakakis K, Neuhäuser M, Peters J, Jakob

- H, Heusch G: Cardioprotective and prognostic effects of remote ischaemic preconditioning in patients undergoing coronary artery bypass surgery: A single-centre randomised, double-blind, controlled trial. *Lancet* 2013; 382:597–604
23. Choi YS, Shim JK, Kim JC, Kang KS, Seo YH, Ahn KR, Kwak YL: Effect of remote ischemic preconditioning on renal dysfunction after complex valvular heart surgery: A randomized controlled trial. *J Thorac Cardiovasc Surg* 2011; 142:148–54
 24. Gallagher SM, Jones DA, Kapur A, Wragg A, Harwood SM, Mathur R, Archbold RA, Uppal R, Yaqoob MM: Remote ischemic preconditioning has a neutral effect on the incidence of kidney injury after coronary artery bypass graft surgery. *Kidney Int* 2015; 87:473–81
 25. Kork F, Balzer F, Spies CD, Wernecke KD, Ginde AA, Jankowski J, Eltzschig HK: Minor postoperative increases of creatinine are associated with higher mortality and longer hospital length of stay in surgical patients. *ANESTHESIOLOGY* 2015; 123:1301–11
 26. Hillis LD, Smith PK, Anderson JL, Bittl JA, Bridges CR, Byrne JG, Cigarroa JE, Disesa VJ, Hiratzka LF, Hutter AM Jr, Jessen ME, Keeley EC, Lahey SJ, Lange RA, London MJ, Mack MJ, Patel MR, Puskas JD, Sabik JF, Selnes O, Shahian DM, Trost JC, Winniford MD; American College of Cardiology Foundation; American Heart Association Task Force on Practice Guidelines; American Association for Thoracic Surgery; Society of Cardiovascular Anesthesiologists; Society of Thoracic Surgeons: 2011 ACCF/AHA Guideline for Coronary Artery Bypass Graft Surgery. A report of the American College of Cardiology Foundation/American Heart Association Task Force on Practice Guidelines. Developed in collaboration with the American Association for Thoracic Surgery, Society of Cardiovascular Anesthesiologists, and Society of Thoracic Surgeons. *J Am Coll Cardiol* 2011; 58:e123–210
 27. Eckle T, Köhler D, Lehmann R, El Kasmi K, Eltzschig HK: Hypoxia-inducible factor-1 is central to cardioprotection: A new paradigm for ischemic preconditioning. *Circulation* 2008; 118:166–75
 28. Cai Z, Luo W, Zhan H, Semenza GL: Hypoxia-inducible factor 1 is required for remote ischemic preconditioning of the heart. *Proc Natl Acad Sci USA* 2013; 110:17462–7
 29. Coca SG, Garg AX, Thiessen-Philbrook H, Koyner JL, Patel UD, Krumholz HM, Shlipak MG, Parikh CR; TRIBE-AKI Consortium: Urinary biomarkers of AKI and mortality 3 years after cardiac surgery. *J Am Soc Nephrol* 2014; 25:1063–71
 30. Price PM, Safirstein RL, Megyesi J: The cell cycle and acute kidney injury. *Kidney Int* 2009; 76:604–13
 31. Boonstra J, Post JA: Molecular events associated with reactive oxygen species and cell cycle progression in mammalian cells. *Gene* 2004; 337:1–13
 32. Seo DW, Li H, Qu CK, Oh J, Kim YS, Diaz T, Wei B, Han JW, Stetler-Stevenson WG: Shp-1 mediates the antiproliferative activity of tissue inhibitor of metalloproteinase-2 in human microvascular endothelial cells. *J Biol Chem* 2006; 281:3711–21
 33. Heung M, Ortega LM, Chawla LS, Wunderink RG, Self WH, Koyner JL, Shi J, Kellum JA; Sapphire and Topaz Investigators: Common chronic conditions do not affect performance of cell cycle arrest biomarkers for risk stratification of acute kidney injury. *Nephrol Dial Transplant* 2016; 31:1633–40
 34. Basile DP, Bonventre JV, Mehta R, Nangaku M, Unwin R, Rosner MH, Kellum JA, Ronco C; ADQI XIII Work Group: Progression after AKI: Understanding maladaptive repair processes to predict and identify therapeutic treatments. *J Am Soc Nephrol* 2016; 27:687–97
 35. Kellum JA, Chawla LS: Cell-cycle arrest and acute kidney injury: The light and the dark sides. *Nephrol Dial Transplant* 2016; 31:16–22
 36. Koyner JL, Shaw AD, Chawla LS, Hoste EA, Bihorac A, Kashani K, Haase M, Shi J, Kellum JA; Sapphire Investigators: Tissue inhibitor metalloproteinase-2 (TIMP-2)·IGF-binding protein-7 (IGFBP7) levels are associated with adverse long-term outcomes in patients with AKI. *J Am Soc Nephrol* 2015; 26:1747–54

Appendix A1. Demographic and Operative Data Further Stratified by Sham-RIPC and RIPC

	MAKE ₉₀ ⁺ (n = 47)			MAKE ₉₀ ⁻ (n = 193)			P Value†
	Sham-RIPC (n = 30)	RIPC (n = 17)	Total	Sham-RIPC (n = 90)	RIPC (n = 103)	Total	
Age, yr, mean (SD)	75.5 (5.3)	71.0 (10.4)	73.9 (7.8)	69.0 (10.5)	70.0 (8.9)	69.5 (9.7)	0.002
Male, n (%)	22 (73.3)	6 (35.3)	28 (59.6)	53 (58.9)	70 (68.0)	123 (63.7)	0.597
ASA grade, n (%)							0.321
1	0 (0)	0 (0)	0 (0)	0 (0)	0 (0)	0 (0)	
2	7 (23.3)	4 (23.5)	11 (23.4)	17 (18.9)	23 (22.3)	40 (20.7)	
3	21 (70)	10 (58.8)	31 (66.0)	67 (74.4)	76 (73.8)	143 (74.1)	
4	2 (6.7)	3 (17.7)	5 (10.6)	6 (6.7)	4 (3.9)	10 (5.2)	
CCF score, median (Q1–Q3), points*	6 (6–6)	6 (6–6)	6 (6–6)	6 (6–6)	6 (6–6)	6 (6–6)	0.551
Preoperative creatinine, mean (SD), mg/dl	1.3 (0.5)	1.2 (0.4)	1.3 (0.5)	1.2 (0.4)	1.1 (0.4)	1.1 (0.4)	0.076
eGFR, mean (SD), ml/min per 1.73 m ²	51.3 (11.1)	53.3 (14.8)	52.4 (12.4)	57.9 (16.8)	57.3 (13.2)	57.6 (15.0)	0.027
Creatinine d90, mean (SD), mg/dl	1.8 (0.9)	1.5 (0.5)	1.7 (0.8)	1.1 (0.4)	1.1 (0.3)	1.1 (0.4)	< 0.001
Comorbidities, n (%)							
Hypertension	30 (100)	16 (94.1)	46 (97.9)	86 (95.6)	100 (97.1)	186 (96.4)	1‡
Congestive heart failure	28 (93.3)	17 (100)	45 (95.7)	73 (81.1)	85 (82.5)	158 (81.9)	0.018
Diabetes	11 (36.7)	7 (41.2)	18 (38.3)	33 (36.7)	39 (37.9)	72 (37.3)	0.900
COPD	12 (40)	2 (11.8)	14 (29.8)	28 (31.1)	34 (33.0)	62 (32.1)	0.757
Chronic kidney disease	11 (36.7)	8 (47.1)	19 (40.4)	28 (31.1)	27 (26.2)	55 (28.5)	0.112
Previous heart surgery	3 (10.0)	4 (23.5)	7 (14.9)	11 (12.2)	9 (8.7)	20 (10.4)	0.378
Medication, n (%)							
Aspirin	15 (50)	12 (70.6)	27 (57.4)	51 (56.7)	65 (63.1)	116 (60.1)	0.739
Clopidogrel	4 (13.3)	0 (0)	4 (8.5)	11 (12.2)	11 (10.7)	22 (11.4)	0.568
β blockers	22 (73.3)	12 (70.6)	34 (72.3)	56 (62.2)	56 (54.4)	112 (58.0)	0.072
Statins	23 (76.7)	13 (76.5)	36 (76.6)	62 (68.9)	67 (65.1)	129 (66.8)	0.196
Diuretics	21 (70)	9 (52.9)	30 (63.8)	50 (55.6)	54 (52.4)	104 (53.9)	0.218
ACEi or ARBs	20 (66.7)	15 (88.2)	35 (74.5)	53 (58.9)	56 (54.4)	109 (56.5)	0.024
Operative characteristics, n (%)							
Aortic cross-clamp duration, median (Q1–Q3), min	78 (63–113)	91 (62–125.5)	89 (63–120)	78 (57–111)	86 (65–105)	84 (60–110)	0.371
Cardiopulmonary bypass time, median (Q1–Q3), min	127 (89–171)	120 (108–195)	120 (90–175)	113 (90–162)	120 (95–147)	121 (90–178)	0.525
CABG only	9 (30.0)	6 (35.3)	15 (31.9)	27 (30.0)	38 (36.9)	65 (33.7)	0.818
Valve only	2 (6.7)	4 (23.5)	6 (12.8)	19 (21.1)	24 (23.3)	43 (22.3)	0.147
Combined or other	19 (63.3)	7 (41.2)	26 (55.3)	44 (48.9)	41 (39.8)	85 (44.0)	0.164
Postoperative complications, n (%)							
Myocardial infarction	2 (6.9)	1 (6.3)	3 (6.7)	3 (3.3)	5 (4.9)	8 (4.1)	0.468
Major bleeding	8 (27.6)	5 (31.3)	13 (28.9)	10 (11.1)	15 (14.6)	25 (13.0)	0.009
Cerebral insult	0 (0)	1 (6.3)	1 (2.2)	3 (3.3)	1 (1.0)	4 (2.1)	0.950
Cerebral hemorrhage	0 (0)	0 (0)	0 (0)	0 (0)	0 (0)	0 (0)	
Pulmonary embolism	0 (0)	0 (0)	0 (0)	0 (0)	0 (0)	0 (0)	

*Cleveland Clinic Foundation (CCF) score (0 to 17 points) is composed of 13 preoperative risk factors, comorbidities, and type of surgery. A higher number correlates with a higher rate of dialysis-dependent acute kidney injury after cardiac surgery (Thakar *et al.*¹³). †P value for the comparison of the two groups: patients meeting the endpoint major adverse kidney events at day 90 (MAKE₉₀⁺) and patients not meeting the endpoint major adverse kidney events (MAKE₉₀⁻). ‡Fisher exact test.

ACEi = angiotensin-converting enzyme inhibitors; ARB = angiotensin II-receptor blockers; ASA = American Society of Anesthesiology grade (grade 5 patients were not included); CABG = coronary artery bypass graft; COPD = chronic obstructive pulmonary disease; d90 = day 90; eGFR = estimated glomerular filtration rate; RIPC = remote ischemic preconditioning.

Appendix A2. Receiver Operating Characteristic Analysis for Major Adverse Kidney Events at Day 90 (Combination of [TIMP-2]·[IGFBP7] and NGAL)

	Combination [TIMP-2]·[IGFBP7] + NGAL (95% CI)	ΔP Value against NGAL	ΔP Value against [TIMP-2]· [IGFBP7]
AUC 4 h	0.65 (0.55–0.75)	0.334	0.772
AUC 12 h	0.66 (0.56–0.75)	0.089	0.332
AUC 24 h	0.57 (0.47–0.67)	0.509	0.406
AUC composite	0.65 (0.55–0.74)	0.431	0.501

AUC = area under the receiver operator characteristics curve; IGFBP7 = insulin-like growth factor-binding protein; NGAL = neutrophil gelatinase-associated lipocalin; TIMP-2 = tissue inhibitor of metalloproteinases-2.

Appendix A3. Receiver Operating Characteristic Analysis for Persistent Renal Dysfunction at Day 90 (Combination of [TIMP-2]·[IGFBP7] and NGAL)

	Combination [TIMP-2]·[IGFBP7] + NGAL (95% CI)	ΔP Value against NGAL	ΔP Value against [TIMP-2]· [IGFBP7]
AUC 4 h	0.66 (0.54–0.78)	0.520	0.519
AUC 12 h	0.60 (0.47–0.73)	0.185	0.978
AUC 24 h	0.54 (0.41–0.66)	0.604	0.577
AUC composite	0.64 (0.52–0.77)	0.717	0.537

AUC = area under the receiver operator characteristics curve; IGFBP7 = insulin-like growth factor-binding protein; NGAL = neutrophil gelatinase-associated lipocalin; TIMP-2 = tissue inhibitor of metalloproteinases-2.