

## Appendix: Traumatic Brain Injury— Transcranial Doppler (TBI-TCD) Investigators

Karim Asehnoune, M.D., Ph.D., Service d'anesthésie, réanimation chirurgicale, Hôtel Dieu, Centre Hospitalier Universitaire (CHU) Nantes, Nantes, France

Philippe Pes, M.D., Emergency medical service, Hôtel Dieu, CHU Nantes, Nantes, France

Jean-Yves Lefrant, M.D., Ph.D., Département Anesthésie Réanimation Douleur Urgences, CHU de Nîmes, Nîmes, France

Sébastien Mirek, M.D., Département d'Anesthésie Réanimation, CHU de Dijon, Dijon, France

François Albasini, M.D., Emergency medical service, Saint Jean de Maurienne Hospital, Saint Jean de Maurienne, France

Caron Scrimgeour, M.D., Emergency medical service, Hôpitaux du Pays du Mont Blanc, Sallanches, France

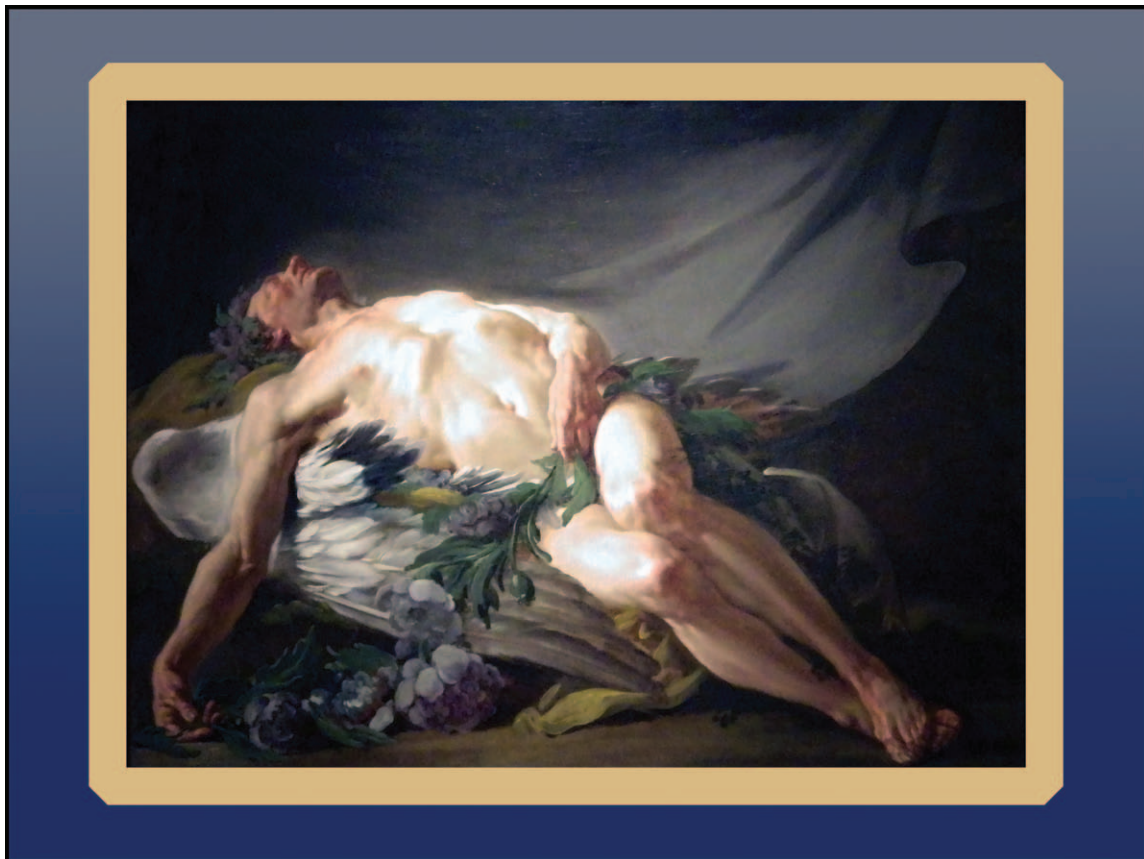
Jean-Marc Thouret, M.D., Intensive Care Unit, Chambéry Hospital, Chambéry, France

Freddy Chartier, M.D., Emergency medical service, Albertville-Moutiers Hospital, Albertville, France

Marc Ginot, M.D., Intensive Care Unit, Besançon University Hospital, Besançon, France

## ANESTHESIOLOGY REFLECTIONS FROM THE WOOD LIBRARY-MUSEUM

### Great-grandson Restout's 1771 Painting, Exhibited as *Morpheus* in 1783



Highly popular in 18th-century France, the *Metamorphoses* written by Ovid of Rome characterized Morpheus as a cave-bound, winged god of dreams who was surrounded by opium poppies. Ovid's vivid description likely influenced the 1771 painting (above), *Morpheus*, by Jean-Bernard Restout (1732 to 1797). As the youngster of the celebrated Restout Dynasty of French painters, Jean-Bernard flourished in the artistic tradition of his great-grandfather Marc-Antoine, grandfather Jean the Elder (1666 to 1702), and father Jean the Younger. In fact, just two years before painting *Morpheus*, Jean-Bernard Restout had been inducted into France's Royal Academy of Painting and Sculpture. During the French Revolution, Restout led the Commune des Arts in suppressing the Academy, the very society most responsible for cultivating Restout's clinical attention to anatomic detail. Missing from Restout's rendering of his god of dreams is Ovid's description of how the shape-shifting "Morpheus ... express'd the shape of man, and imitated best... but all his action is confined, extending not beyond our humankind." (Copyright © the American Society of Anesthesiologists' Wood Library-Museum of Anesthesiology)

George S. Bause, M.D., M.P.H., Honorary Curator, ASA's Wood Library-Museum of Anesthesiology, Schaumburg, Illinois, and Clinical Associate Professor, Case Western Reserve University, Cleveland, Ohio. UJYC@aol.com.