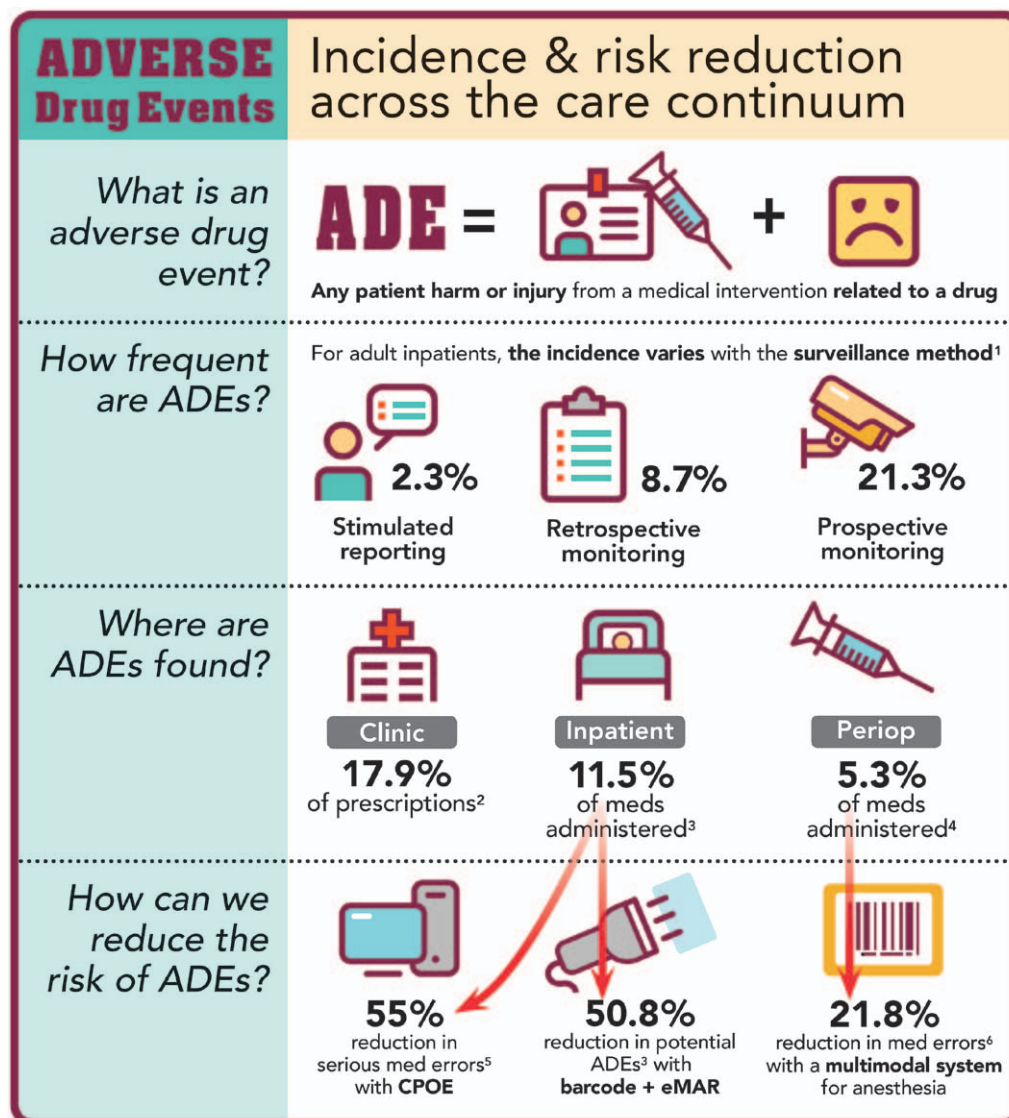


# ANESTHESIOLOGY



ADE = adverse drug event; CPOE = computerized physician order entry; eMAR = electronic medication administration record.

Infographic created by Jonathan P. Wanderer, M.D., Vanderbilt University School of Medicine, and James P. Rathmell, M.D., Brigham and Women's Health Care/Harvard Medical School. Illustration by Annemarie Johnson, Vivo Visuals. Dr. Wanderer is funded by the Foundation for Anesthesia Education and Research, Schaumburg, Illinois, and Anesthesia Quality Institute's Mentored Research Training Grant—Health Services Research, Schaumburg, Illinois. Address correspondence to Dr. Wanderer: jon.wanderer@vanderbilt.edu.

- Martins AC, Giordani F, Rozenfeld S: Adverse drug events among adult inpatients: A meta-analysis of observational studies. *J Clin Pharm Ther* 2014; 39:609-20
- Gandhi TK, Weingart SN, Borus J, Seger AC, Peterson J, Burdick E, Seger DL, Shu K, Federico F, Leape LL, Bates DW: Adverse drug events in ambulatory care. *N Engl J Med* 2003; 348:1556-64
- Poon EG, Keohane CA, Yoon CS, Ditmore M, Bane A, Levitzion-Korach O, Moniz T, Rothschild JM, Kachalia AB, Hayes J, Churchill WW, Lipsitz S, Whittemore AD, Bates DW, Gandhi TK: Effect of bar-code technology on the safety of medication administration. *N Engl J Med* 2010; 362:1698-707
- Nanji KC, Patel A, Shaikh S, Seger DL, Bates DW: Evaluation of perioperative medication errors and adverse drug events. *ANESTHESIOLOGY* 2016; 124:25-34
- Bates DW, Leape LL, Cullen DJ, Laird N, Petersen LA, Teich JM, Burdick E, Hickey M, Kleeefield S, Shea B, Vander Vliet M, Seger DL: Effect of computerized physician order entry and a team intervention on prevention of serious medication errors. *JAMA* 1998; 280:1311-6
- Merry AF, Webster CS, Hannam J, Mitchell SJ, Henderson R, Reid P, Edwards KE, Jardim A, Pak N, Cooper J, Hopley L, Frampton C, Short TG: Multimodal system designed to reduce errors in recording and administration of drugs in anaesthesia: Prospective randomised clinical evaluation. *BMJ* 2011; 343:d5543