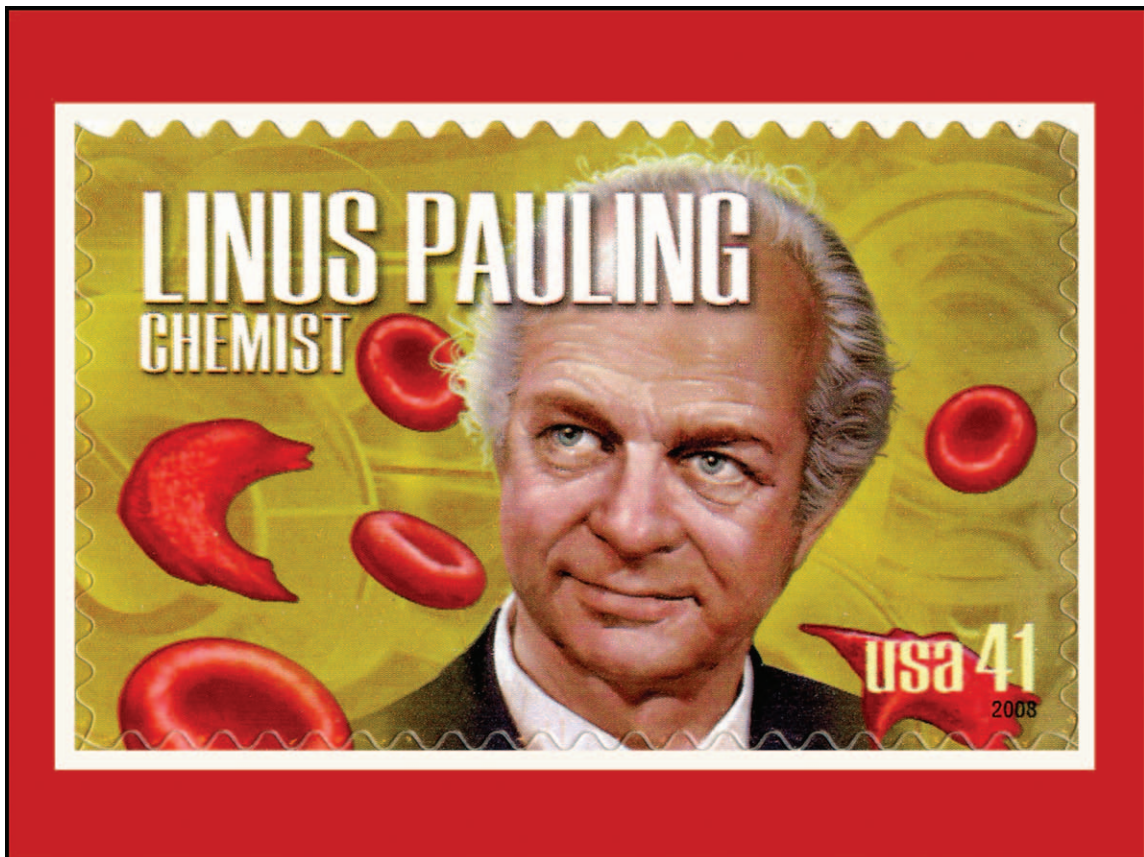


21. Nanji KC, Rothschild JM, Salzberg C, Keohane CA, Zigmont K, Devita J, Gandhi TK, Dalal AK, Bates DW, Poon EG: Errors associated with outpatient computerized prescribing systems. *J Am Med Inform Assoc* 2011; 18:767-73
22. American Society of Anesthesiologists. ASA Physical Status Classification. Available at: <http://www.asahq.org/resources/clinical-information/asa-physical-status-classification-system>. Accessed October 15, 2014
23. Cullen DJ, Bates DW, Small SD, Cooper JB, Nemeskal AR, Leape LL: The incident reporting system does not detect adverse drug events: A problem for quality improvement. *Jt Comm J Qual Improv* 1995; 21:541-8
24. Merry AF, Weller JM, Robinson BJ, Warman GR, Davies E, Shaw J, Cheeseman JF, Wilson LF: A simulation design for research evaluating safety innovations in anaesthesia*. *Anaesthesia* 2008; 63:1349-57
25. Jelacic S, Bowdle A, Nair BG, Kusulos D, Bower L, Togashi K: A System for Anesthesia Drug Administration Using Barcode Technology: The Codonics Safe Label System and Smart Anesthesia Manager™. *Anesth Analg* 2015; 121:410-21

ANESTHESIOLOGY REFLECTIONS FROM THE WOOD LIBRARY-MUSEUM

The 41-cent Postage Stamp of Linus Pauling



At the Corvallis alma mater of Dr. Linus Pauling, Oregon State University, and in New York City, public ceremonies on March 6, 2008, celebrated the release of the U.S. Postal Service's second pane of the *American Scientists* issuance. This release featured 41-cent stamps honoring four scientists: biochemist Gerty Cori, astronomer Edwin Hubble, physicist John Bardeen, and chemist (and stamp collector) Linus Pauling. The year before becoming the first person to have received two unshared Nobel Prizes (Chemistry, 1954; Peace, 1962), Pauling had published in *Science* his hydrate microcrystal theory of anesthesia. As originally painted by artist Victor Stabin, the image on the Pauling stamp (*above*) combines a version of Pauling's second Nobel portrait with illustrations of sickled red blood cells (erythrocytes) from one of his hundreds of research papers. Oregonian Kyle Odegard reported that "Pauling's research on sickle cell anemia combined medicine, biology and chemistry." (Copyright © the American Society of Anesthesiologists, Inc.)

George S. Bause, M.D., M.P.H., Honorary Curator, ASA's Wood Library-Museum of Anesthesiology, Schaumburg, Illinois, and Clinical Associate Professor, Case Western Reserve University, Cleveland, Ohio. UJYC@aol.com.