

Visuospatial Ability as a Predictor of Novice Performance in Ultrasound-guided Regional Anesthesia

Atif Shafqat, M.B.B.S., D.A., M.Sc., M.R.C.A., Ph.D.,
Eamonn Ferguson, B.Sc., Ph.D., C.Psychol., A.F.B.Ps.S., F.R.S.H.,
Vishal Thanawala, M.B.B.S., M.D., E.D.R.A., F.R.C.A., Nigel M. Bedforth, B.Med.Sci., B.M., B.S., F.R.C.A.,
Jonathan G. Hardman, B.Med.Sci., B.M., B.S., F.A.N.Z.C.A., F.R.C.A., D.M.,
Robert A. McCahon, M.B., Ch.B., F.R.C.A., M.Med.Sci.

ABSTRACT:

Background: Visuospatial ability correlates positively with novice performance of simple laparoscopic tasks. The aims of this study were to identify whether visuospatial ability could predict technical performance of an ultrasound-guided needle task by novice operators and to describe how emotional state, intelligence, and fear of failure impact on this.

Methods: Sixty medical student volunteers enrolled in this observational study. The authors used an instructional video to standardize training for ultrasound-guided needle advancement in a turkey breast model and assessed volunteers' performance independently by two assessors using composite error score (CES) and global rating scale (GRS). The authors assessed their "visuospatial ability" with mental rotation test (MRT), group embedded figures test, and Alice Heim group ability test. Emotional state was judged with UWIST Mood Adjective Checklist (UMACL), and fear of failure and general cognitive ability were judged with numerical reasoning test.

Results: High CES scores (high error rate) were associated with low MRT scores ($\rho = -0.54$; $P < 0.001$). Better GRS scores were associated with better MRT scores ($\rho = 0.47$; $P < 0.001$). Regarding emotions, GRS scores were low when anxiety levels were high ($\rho = -0.35$; $P = 0.005$) and CES scores (errors) were low when individuals reported feeling vigorous and active ($\rho = -0.30$; $P = 0.01$).

Conclusions: An MRT predicts novice performance of an ultrasound-guided needling task on a turkey model and as a trait measure could be used as a tool to focus training resources on less-able individuals. Anxiety adversely affects performance. Therefore, both may prove useful in directing targeted training in ultrasound-guided regional anesthesia. (**ANESTHESIOLOGY** 2015; 123:1188-97)

THE ability to perform practical procedures competently is essential to the safe practice of anesthesia. Ultrasound-guided regional anesthesia (USGRA) is a complex, invasive procedural skill that requires manual dexterity, hand-eye coordination, and a working knowledge of sono-anatomy.¹ International regional anesthesia societies have emphasized the need for training and competency assessment in USGRA to ensure safe practice.²⁻⁴ However, some trainees will learn more quickly than others.⁵ Early identification of those who may require additional support is key to developing efficient expertise acquisition within the time constraints of postgraduate training.

Mental rotation is a visuospatial ability to mentally rotate and manipulate 2D and 3D objects. Mental rotation correlates positively with novice performance of simple laparoscopic tasks on benchtop models.⁶⁻⁹ At a basic level, it is possible that laparoscopy and USGRA are similar with respect to the interaction

What We Already Know about This Topic

- Visuospatial testing of an individual's ability to mentally rotate and manipulate two- and three-dimensional objects correlates positively with novice performance of simple laparoscopic tasks on benchtop models.
- Emotional state, fear of failure, and intelligence also impact performance, but previous studies have never examined the interplay between these factors and performance.

What This Article Tells Us that Is New

- Visuospatial testing predicts novice performance in performing ultrasound-guided needle placement on a benchtop model, and anxiety adversely affects performance. These factors may prove useful in creating tailored training of ultrasound-guided regional anesthesia designed to meet individual learner's needs.

of the operator's hands and eyes with the ultrasound probe/laparoscope, the patient, and the screen. The importance of visuospatial ability has been emphasized in USGRA skills

Corresponding article on page 993.

Submitted for publication February 6, 2015. Accepted for publication June 1, 2015. From the University Department of Anesthesia and Intensive Care, Queen's Medical Centre, Nottingham University Hospitals NHS Trust, University of Nottingham, Nottingham, United Kingdom (A.S., V.T., N.M.B., J.G.H., R.A.M.); and School of Psychology, Personality, Social Psychology and Health (PSPH) Research Group, University of Nottingham, Nottingham, United Kingdom (E.F.).

Copyright © 2015, the American Society of Anesthesiologists, Inc. Wolters Kluwer Health, Inc. All Rights Reserved. *Anesthesiology* 2015; 123:1188-97

acquisition.¹ However, there is little evidence to support the use of visuospatial testing to identify individuals who may benefit from early, targeted training in USGRA. The primary aim of this study was to determine whether visuospatial ability could predict technical performance of an ultrasound-guided needle task by novice operators. Specifically, we chose to study the mental rotation test (MRT), the group embedded figures test (GEFT), and the Alice Heim group ability test (AH4).

Previous studies have considered the impact of visuospatial ability on novice skill performance in isolation. However, the role of traits and state emotional processes are also important for a fuller understanding of healthcare provision through their influence on clinical skills acquisition.^{10,11} Specifically, previous studies have not investigated the interplay between skill performance and emotional processing.^{1,12–14} Two emotional components are relevant here. State anxiety is well known to be related to performance.¹⁵ The trait, fear of failure, is a subclinical form of state anxiety when success is being valued.^{16,17} Fear of failure could potentially hinder performance.^{18,19} In addition, general cognitive ability is considered to be one of the best predictors of performance overall.²⁰ Therefore, we also aimed to study the relationship among emotional state, fear of failure, and intelligence with novice skill performance of an ultrasound-guided needle task.

Materials and Methods

The study was reviewed and approved by the University of Nottingham Medical School Research Ethics Committee

(Approval Reference: L13092012 SCS Anesthesia). Medical students from the University of Nottingham Medical School were invited to participate in the study through poster advertising. Students who expressed a wish to participate were emailed a participant information leaflet and an invitation to attend the study. Written informed consent for the study, including video recording, was obtained from all participants.

Design

This single-center, prospective, blinded observational study was conducted at the University Department of Anesthesia, Queen's Medical Centre, Nottingham University Hospitals NHS Trust, Nottingham, United Kingdom. Subjects with previous experience of ultrasound scanning or performing regional anesthesia were excluded from the study. The study was organized in four phases (fig. 1). The enrolled medical students were asked to undergo and complete all four phases of the study. Participants' identities were masked throughout the study, and their assessments were concealed from view within individual folders. Assessors of the ultrasound-guided needling task (phase 4) were blinded to the outcomes of the preceding assessments.

Phase 1

We collected basic demographic data including age, sex, year of study in medical school, and previous experience of USGRA.

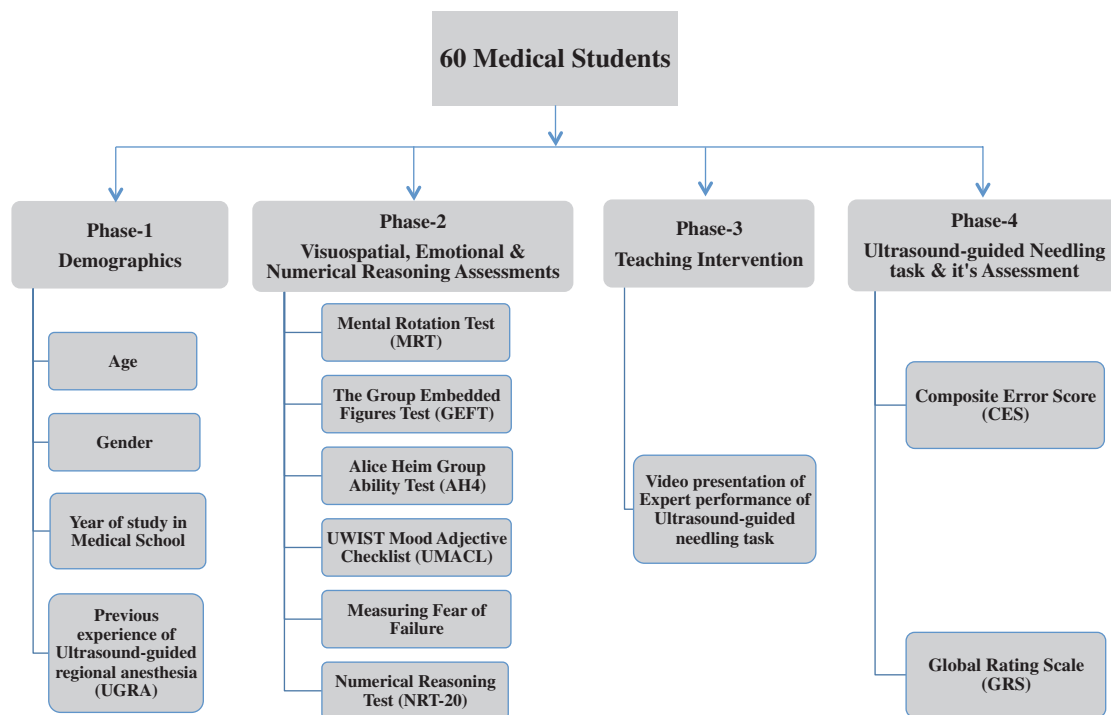


Fig. 1. Flowchart showing study design. The study was organized into four phases, and the participants were asked to undergo and complete all four phases of the study.

Phase 2

This phase consisted of standardized visuospatial, emotional, and numerical reasoning assessments of the study participants. The assessments were paper based and administered under examination conditions, as per their standardization. Participants were blinded to the study hypothesis and their test scores. Brief descriptions of each visuospatial, emotional, and numerical reasoning assessment are described in the following text.

Visuospatial Assessments

The visuospatial assessments consisted of the MRT, GEFT, and AH4.

Mental Rotation Test. There are four different variations of MRT: MRT-A, MRT-B, MRT-C, and MRT-D.^{21–23} We used MRT-A, which consists of 24 problem figures. Each problem task has a target figure on the left and four stimulus figures on the right. Two of these stimulus figures are rotated versions of the target figure and two of the stimulus figures cannot be matched to the target figure. The aim is to mentally rotate the figures around the vertical axis to find the two correct rotated versions of the target figure. Participants were given 4 min to complete the first set of 12 problem tasks, followed by a 1-min break before completing the second set of 12 problem tasks in the next 4 min.

The Group Embedded Figures Test. The GEFT measures field independence, which is the ability to perform a focal task independently of any background information or distracters.^{24,25} The aim is to find a previously seen simple figure within a larger complex figure, which has been structured in a way to obscure or embed the simple figure. The participants were required to identify and outline accurately a simple shape embedded in a complex figure. The test consists of three sections. The participants were initially given 2 min to complete the seven problems in the first section. After this, second and third sections consisting of nine problems each were completed in 10 min.

Alice Heim Group Ability Test. The AH4 is designed as a group test of general intelligence, which primarily assesses deductive reasoning including verbal, mathematical, and spatial reasoning.²⁶ We used AH4 to assess spatial reasoning skills, which is the ability to visualize, mentally rotate, and manipulate two- or three-dimensional shapes or patterns. The test consists of 65 questions, and participants were given 10 min to complete as many questions as possible.

Emotional Assessments

Emotional processes that tap into state anxiety or tense arousal (TA), as well as positive mood states (*e.g.*, energetic arousal [EA]), were assessed using the UWIST Mood Adjective Checklist (UMACL) and fear of failure.

UWIST Mood Adjective Checklist. The UMACL is used to measure mood and comprises three bipolar scales: EA (vigorous *vs.* tired: coefficient $\alpha = 0.79$), TA (nervous *vs.* relaxed: coefficient $\alpha = 0.76$), and hedonic tone (pleasant *vs.* unpleasant mood: coefficient $\alpha = 0.81$).^{27,28} In addition to these scales, a monopolar anger/frustration (coefficient $\alpha = 0.80$) scale was also used. The participants were instructed to complete the UMACL checklist according to their present mood using 28 adjectives each on a 4-point scale (“definitely,” “slightly,” “slightly not,” or “definitely not”).

Fear of Failure. Fear of failure assesses the general preference to be motivated not to succeed but to avoid failing.²⁹ This assessment consists of four statements pertaining to fear of failure, each scored on a 4-point scale (“always,” “often,” “rarely,” and “never”). Scores were then obtained by summing the item scores. The reported coefficient α was 0.70.

Numerical Reasoning Assessments

Numerical Reasoning Test.* This test measures mathematical and logical reasoning *via* 20 short reasoning problems based on numbers that do not require any previous training in mathematics. It is a test of fluid intelligence, which depicts skills of problem-solving, abstract reasoning, and the ability to learn new things, irrespective of previous knowledge or education. There are 20 items, which include series completion (numbers and matrices), basic arithmetic problems (computational speed), and other deductive reasoning tasks. The participants were given 15 min to solve as many problems as possible.

Phase 3

In this phase, the participants were given 30 min to watch and review an 11-min video³⁰ mapped to specific learning objectives, which modeled expert performance of ultrasound-guided needle advancement in a turkey breast model.

The learning objectives were as follows:

1. Switch on the ultrasound machine (S-Series, Sonosite Limited, United Kingdom).
2. Correctly orientate the ultrasound probe (linear, 38 mm) in relation to the display on the screen.
3. Ensure adequate application of conducting gel to enhance ultrasound transmission and picture quality.
4. Locate and identify the target (olive) within the turkey breast.
5. Adjust the gain function to improve the quality of the image by altering brightness of the picture.
6. Alter the depth of the image to obtain a suitable image of the target.
7. By using an in-plane approach, insert a 50-mm Stimuplex® A needle (B. Braun, Germany) into the turkey breast and aim to place the needle tip at the 12 o'clock position, as indicated by the attending assessors, above the upper edge of the target, without piercing the target.

* Chamorro-Premuzic T: The Numerical Reasoning Test 20-Items (NRT-20). Goldsmiths, University of London, 2008 (unpublished test).

Phase 4

The fourth phase included an ultrasound-guided needling task and its assessment. Participants were asked to complete the ultrasound-guided needling task, as demonstrated in the video, on a turkey breast model^{31,32} using a standard ultrasound transducer probe (38-mm high-frequency linear array transducer; HFL38X 13-6 MHz, Sonosite Limited). To improve realism, the turkey breast model was inserted into the draped groin recess of a Laerdal® IV Torso manikin (Laerdal Medical Limited, United Kingdom), which was used solely for this study. The participants received no help or feedback before or during the task. Study participation ceased once the ultrasound-guided needling task was completed.

Participants were independently assessed by two anesthesiologists experienced in USGRA as they performed the task. The assessors used two previously validated assessments of USGRA technical performance: composite error score (CES)³²⁻³⁴ (appendix 1) and global rating scale (GRS)³⁵⁻³⁷ (appendix 2). The assessors had undergone specific training and practice in the use of these assessment tools. The CES was calculated by adding the total number of errors, number of needle passes, and image quality score for each participant. A lower CES is associated with better accuracy and task performance. The GRS consisted of seven items each rated on a five-point scale. The GRS predominantly assessed more general behaviors and the overall performance of the participant.

Statistical Analysis

Descriptive statistics for demographic and outcome measure data were calculated. CES data follow a nonnormal distribution and are thus presented as median (interquartile range). Normality of other data was assessed by histogram and the Shapiro-Wilk and Skewness/Kurtosis tests.

We performed an initial exploratory analysis using Spearman correlation coefficient ρ (rho) to determine which of the six explanatory variables was the most predictive of better task performance. The count data (CES) were overdispersed. This was unlikely because of excessive zeros as the proportion of extra zeros was considerably small ($4/60 = 6.66\%$); therefore, negative binomial regression analysis was conducted for CES. For continuous data, the relationship between each potential explanatory variable and GRS was evaluated in an ordinary least square (OLS) regression. Bonferroni corrections were applied for multiple testing. We then created a regression model using the explanatory variable most predictive of performance. To examine which aspects of USGRA technical performance were most strongly correlated with visuospatial ability, we then deconstructed both assessments into their respective domains to perform a subanalysis with the predictive variable; this subanalysis was outside the previous validation of the CES and GRS. To achieve a study power of 0.8 ($\alpha = 0.05$), we calculated that we would need to recruit 60 participants for this model with an assumed moderate effect size³⁸ ($r = 0.3$ to 0.5).

We chose to make nonpairwise comparisons between males and females to determine whether any differences in visuospatial ability existed. In all cases, we used P values less than 0.05 (two tailed) to indicate statistical significance.

Reliability of the assessment tools, *i.e.*, CES and GRS, was evaluated using intraclass correlation coefficient, Cronbach α coefficient and SE of the measurement as a percentage of the mean (SEM [%]).^{39,40} The statistical analysis software STATA/IC version 10.0 (StataCorp, USA) was used for data analysis.

Results

All individuals who expressed an interest in participating in the study were recruited. Participant demographics and summary statistics for visuospatial ability and task performance are summarized in table 1. Males were found to exhibit better mental rotation skills compared with females ($P < 0.001$; table 2).

Reliability of CES and GRS

The intraclass correlation coefficient and SEM (%) for CES and GRS were 0.97 (15.29%) and 0.91 (8.53%), respectively; this demonstrates a high degree of interrater agreement. Similarly, Cronbach α coefficient and SEM (%) for CES and GRS were 0.98 (9.49%) and 0.96 (5.69%), respectively; this demonstrates a high degree of interitem consistency.

Composite Error Score versus Visuospatial Ability Assessments

Of the three visuospatial assessments (MRT, GEFT, and AH4), only MRT correlated significantly with CES ($\rho = -0.54$; $P < 0.001$; fig. 2; table 3), indicating that a high error rate is associated with low MRT scores. The negative binomial regression coefficients for each variable showed that for each unit increase in MRT, the expected log count of the CES decreases by 0.08 unit ($P < 0.001$). After Bonferroni adjustments ($P < 0.0016$), only needle advancement without visualization of needle tip ($\rho = -0.52$; $P < 0.001$) and number of needle passes ($\rho = -0.45$; $P < 0.001$) correlated significantly with MRT.

Global Rating Scale versus Visuospatial Ability Assessments

Of the three visuospatial assessments (MRT, GEFT, and AH4), only MRT correlated significantly with GRS ($\rho = 0.47$; $P < 0.001$; fig. 3; table 3), indicating that better performance was associated with better mental rotation skills. An OLS regression established the univariate association of GRS with MRT showing that for a 1-unit increase in MRT, we would expect a 0.43-unit increase in GRS ($P = 0.002$). After Bonferroni adjustments ($P < 0.0031$), only time and motion ($\rho = 0.44$; $P < 0.001$), instrument handling ($\rho = 0.47$; $P < 0.001$), and flow of procedure ($\rho = 0.44$; $P < 0.001$) correlated significantly with MRT.

Table 1. Participant Demographics and Summary Statistics for Visuospatial Ability and Task Performance

Characteristics	Overall N = 60
Participant demographics	
Age (yr), mean (SD)	23.3 (4.3)
Gender, n (%)	
Male	30 (50)
Female	30 (50)
Year of study in medical school, n (%) [*]	
Year 1	8 (14.0)
Year 2	21 (36.8)
Year 3	13 (22.8)
Year 4	11 (19.3)
Year 5	4 (7.0)
Assessment†	Score
Summary statistics	
MRT	13.9 (5.3)
GEFT	17.0 (14.0–17.5)
AH4	60.0 (53.0–63.0)
UMACL	
EA	19.0 (16.5–21.5)
TA	15.2 (3.4)
HT	27.0 (25.0–29.0)
AF	6.0 (5.0–9.0)
Fear of failure	6.8 (1.6)
NRT-20	13.9 (2.5)
CES	6.0 (3.0–10.0)
GRS	19.7 (6.0)

^{*} 3 (5%) missing. † Continuous variables with a normal distribution are represented as mean (SD), and continuous variables not normally distributed are represented as median (interquartile range).

AF = anger/frustration; AH4 = Alice Heim group ability test; CES = composite error score; EA = energetic arousal; GEFT = group embedded figures test; GRS = global rating scale; HT = hedonic tone; MRT = mental rotation test; NRT-20 = numerical reasoning test; TA = tense arousal; UMACL = UWIST Mood Adjective Checklist.

Composite Error Score versus Emotional Assessments

Of the UMACL, EA was found to correlate negatively with CES ($\rho = -0.30$; $P = 0.01$; table 3). By contrast, TA correlated positively but weakly with CES ($\rho = 0.26$; $P = 0.04$; table 3). This showed that errors would be low in vigorous, active individuals and high in anxious individuals. The negative binomial regression coefficients for each of the variable showed that for each unit increase on EA, the expected log count of the CES decreases by 0.07 unit ($P = 0.02$).

Global Rating Scale versus Emotional Assessments

Of the UMACL, only TA correlated negatively with GRS ($\rho = -0.35$; $P = 0.005$; table 3). This showed that GRS

quality scores would be low when anxiety level is high. An OLS regression established the univariate association of GRS with TA showing that for a 1-unit increase in TA, we would expect a 0.54-unit decrease in GRS ($P = 0.01$).

Discussion

The results indicate that MRT predicts technical performance of an ultrasound-guided needle advancement task by novice operators. The study shows that males are likely to have better mental rotation capabilities than females. This is in line with two previous meta-analyses,^{23,41} which showed effect sizes around 0.95 favoring males. This difference means that the MRT cannot be used as a selection tool for medical posts, *i.e.*, high stakes assessment, because men are likely to be preferentially selected, and this would introduce indirect sexual discrimination against women. However, that is not to say that men with better MRT scores perform better at the task. Two previous studies of laparoscopic skills have demonstrated that gender does not affect psychomotor performance,^{42,43} although the affect of MRT scores of both males and females remained unknown. In an observational study of surgical trainees with very limited laparoscopic experience, Grantcharov *et al.*⁴³ demonstrated that male trainee surgeons made a similar number of errors and unnecessary hand movements during their performance of six simulated laparoscopic tasks similar to females.

One may suggest that it would be useful to provide a range of MRT scores wherein learners could benefit the most from focused training. However, we are unable to do so at this stage of our work. Although our study shows that MRT has a predictive validity for performance of an ultrasound-guided needle task, it does not indicate at what point MRT performance can be defined as adequate. Despite this limitation, we believe that it is reasonable to state that low error rates, better image quality, and better global performance are associated with higher MRT scores. Therefore, strategies that aim to develop mental rotation skills could be developed and used to improve ultrasound-guided needle advancement skills.

We also found that negative mood adversely affects performance. Therefore, good performance seems to be a function of visuospatial ability and reducing anxiety. Thus, a second practical implication of our study is that stress and anxiety when performing the task may need to be reduced in the training and learning environment. However, in the real clinical setting, some level of anxiety will be associated with any clinical intervention, and thus, the degree of stress elicited by the task

Table 2. MRT Scores According to the Gender of the Participants

Gender	N (%)	MRT (mean)	SD	95% CI	P Value
Female	30 (50)	10.9	4.64	9.16–12.63	<0.001
Male	30 (50)	17.0	4.15	15.44–18.55	

Data are mean (SD).

MRT = mental rotation test.

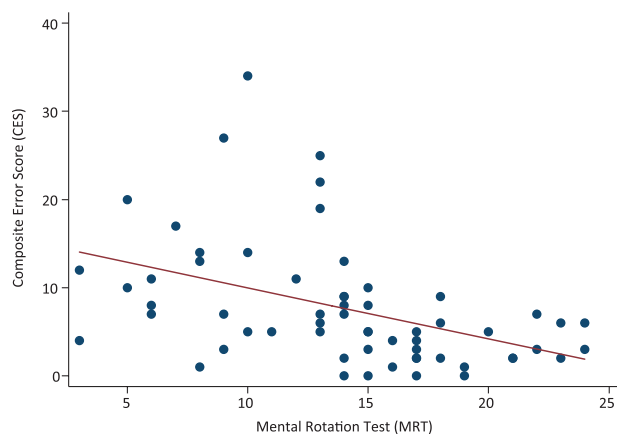


Fig. 2. Relationship of composite error score (CES) with mental rotation test (MRT). MRT is negatively correlated with CES ($\rho = -0.54$; $P < 0.001$), which reveals that increasing error rate is associated with low MRT scores.

may itself increase its validity.¹⁰ It may be more relevant for educators to develop curricula that allow novice practitioners to learn the necessary coping skills to deal with the emotional costs of this type of work and procedure.

Limitations are integral to any investigation and warrant specific comment here. Aside from the ethical problems of allowing novice practitioners to practice on real patients, it is likely that anatomical differences, doctor–patient interactions, and the pressures of achieving successful blocks would generate inconsistent results in real clinical situations.^{1,33} For the purpose of this study, we used a turkey breast benchtop model rather than *in vivo* needling. Despite the lack of clinical context, we believe that our participants experienced an “examination-like” stress caused by their assessments during the study. In addition, “live assessment” of the participants may have added to their stress levels. It is likely that the combined stress and fear could produce detrimental and variable effects on performance such as that in clinical practice.^{15,44,45}

Despite the limitations of the turkey breast benchtop model, it is accepted as an initial means to evaluate novice performance in USGRA³ and to perform training in this complex technical task.³¹ As such, we believed that our benchtop simulation provided a reproducible and realistic environment in which to assess our subjects.

The subjects were medical students and not practicing doctors; therefore, one could argue that with seniority and experience, there is an inherent level of psychomotor expertise, which confers an improved ability to perform new psychomotor skills. Thus, it could be debated that had we studied anesthesiology residents, the correlations between MRT and GRS or CES may have been weaker. However, previous work has demonstrated that medical student’s performance of an ultrasound-guided needle task is broadly comparable with that of novice resident doctors.^{32,33} Hence, we do not consider that the use of medical student volunteers presents a significant limitation to our study; rather the fact that they have no experience may be considered a positive aspect of the study.

We have used the assessments of visuospatial ability, emotional processing, and general cognitive ability, which are considered to be valid and reliable.^{21–27} With regard to CES and GRS, we have demonstrated high levels of interrater agreement and internal consistency of the assessment tools; this is in line with the previous findings.^{33,37} We believe that the high interrater agreement reflects the assessor training with the CES and GRS tools before recruitment. As such, we believe that our measurement of task performance is both reliable and valid.

Finally, we have attempted to mitigate for any bias in assessment by asking our assessors to rate the participants’ performance independent of one another and without knowledge of the participants’ scores in the various psychologic assessments completed beforehand. The premise of this study was to identify whether visuospatial ability could be used to predict technical performance of an ultrasound-guided needle task by novice operators. In doing so, we have identified correlations among performance, mental rotation

Table 3. Correlation of CES and GRS with Visuospatial, Emotional, and Numerical Reasoning Assessments

Visuospatial, Emotional, and Numerical Reasoning Assessments	Spearman Correlation Coefficient (ρ)	
	CES (P Value)	GRS (P Value)
MRT	−0.54 (<0.001)	0.47 (<0.001)
AH4	−0.09 (0.49)	0.09 (0.49)
GEFT	−0.06 (0.60)	0.00 (0.95)
UMACL		
Energetic arousal	−0.30 (0.01)	0.06 (0.62)
Tense arousal	0.26 (0.04)	−0.35 (0.005)
Hedonic tone	−0.22 (0.08)	0.18 (0.15)
Anger/frustration	0.16 (0.21)	−0.19 (0.13)
Fear of failure	0.05 (0.69)	−0.07 (0.57)
NRT-20	0.01 (0.93)	−0.05 (0.69)

Spearman correlation coefficient (ρ) of CES and GRS with visuospatial, emotional, and numerical reasoning assessments; significance at $P < 0.05$.

AH4 = Alice Heim group ability test; CES = composite error score; GEFT = group embedded figures test; GRS = global rating scale; MRT = mental rotation test; NRT-20 = numerical reasoning test; UMACL = UWIST Mood Adjective Checklist.

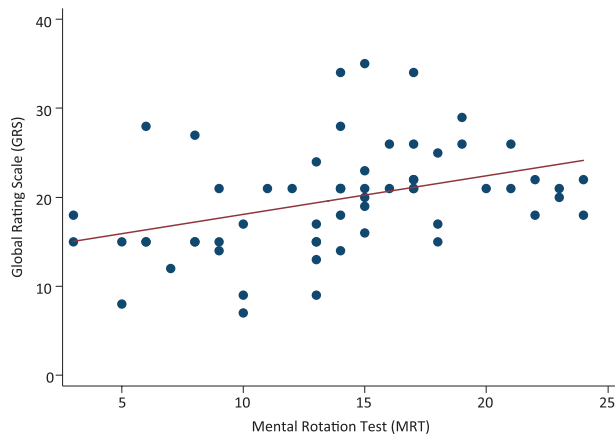


Fig. 3. Relationship of global rating scale (GRS) with mental rotation test (MRT). MRT is positively correlated with GRS ($\rho = 0.47$; $P < 0.001$), which shows that enhanced GRS quality scores are associated with high MRT scores.

skills, and negative mood. As a trait measure, MRT has the potential to be used as a tool to focus educational and training resources on individuals who have less ability to perform ultrasound-guided needle tasks.

Future research could investigate whether specific training interventions could transform visuospatial ability and thus enhance skills acquisition in USGRA. In broader terms, we believe that the predictive value of MRT in videolaryngoscopy and fiberoptic intubation should be investigated. With regard to MRT as a screening tool to focus training, we believe that future studies need to assess the sensitivity and specificity of MRT in this context.

Acknowledgments

This study was supported by an educational grant from Regional Anesthesia—United Kingdom, London, United Kingdom.

Competing Interests

Dr. Hardman is an editor of *British Journal of Anesthesia*. Dr. Ferguson was a principal investigator on a case award grant from the ESRC (Integrating Prospect theory [Framing Effects] and the Common Sense Model of illness to improve medication compliance in glaucoma patients); was a coinvestigator on a grant from Chief Scientists Office, Scotland (A randomized controlled trial to test if a simple anticipated regret manipulation leads to a significant increase in organ donor registrations); is a joint PhD supervisor on a project with Experian (Potential of Psychological Information to Inform Credit Scoring); is a coinvestigator on a grant from DEFRA (Overcoming Barriers to Uptake of Best Welfare Practice by Sheep Farmers); is a coinvestigator on a grant from Pfizer (Pain Phenotypes in Rheumatoid Arthritis: A Patient-centered, Stratified Approach to Optimizing Disease Modifying and Analgesic Treatments); is a coinvestigator on a grant from Arthritis UK Research (Pain Centre); supervises externally funded PhD students (ESRC PhD studentships; Reluctant Altruism, Schizophrenia and Empathy); was paid as an Associate Editor for *Journal of Behavioral Medicine* and as Deputy Editor for *British Journal of Psychology*; is paid as

an Associate Editor for *Annals of Behavioral Medicine*; is an invited speaker at ISBT (expenses and travel paid); is paid as an external examiner at Edinburgh University and Lancaster University; has had expenses paid to present talks at (1) Workshop: Right Patient, Right Place, Right Time: When and How to Use the Emergency Department: Health Literacy, Decision-making and Communication, Università Cattolica del Sacro Cuore, Milan, Italy, April 11 to 12, 2014, (2) Taxometrics, Psychometrics and Clinometrics: Stratified Medicine and Assessing Phenotypes—Economic and Social Research Council (ESRC) Advanced Quantitative Methods National Conference, White Rose DTC, Sheffield University, Sheffield, July 24 to 25, 2014, and (3) Personality: Myths, Misconceptions and Misunderstandings—Implications for Current and Future Medical Education, Selection and Training, INReSH London, November, 10 to 11, 2014; receives royalties each year from GL Assessment for the Pediatric Index of Emotional Distress; is a coinvestigator on a grant from the U.S. Defense Medical Research and Development Program (Study to Examine Psychological Processes in Suicidal Ideation and Behavior), which does not relate directly to the current submitted work but is a different grant; he is a coinvestigator on a grant from the ESRC (Individual Differences in the Impact of Socio-Economic Events on Health and Well-being) and this does not relate directly to the current submitted work but is a different grant. Dr. Bedford runs and is a faculty member on teaching courses sponsored by Sonosite Ltd. and NIHR National Institute for Health Research—Research for the Patient Benefit. The other authors declare no competing interests.

Correspondence

Address correspondence to Dr. Shafqat: University Department of Anesthesia and Intensive Care, Queen's Medical Centre, Nottingham University Hospitals NHS Trust, Nottingham NG7 2UH, United Kingdom. shafqatatif@hotmail.com. Information on purchasing reprints may be found at www.anesthesiology.org or on the masthead page at the beginning of this issue. ANESTHESIOLOGY's articles are made freely accessible to all readers, for personal use only, 6 months from the cover date of the issue.

References

1. Smith HM, Kopp SL, Johnson RL, Long TR, Cerhan JH, Hebl JR: Looking into learning: Visuospatial and psychomotor predictors of ultrasound-guided procedural performance. *Reg Anesth Pain Med* 2012; 37:441–7
2. National Institute of Clinical Excellence. Ultrasound Guided Regional Nerve Block. 2009. Available at: <http://www.nice.org.uk/guidance/ipg285>. Accessed August 20, 2015
3. Association of Anaesthetists of Great Britain and Ireland. Ultrasound in Anaesthesia and Intensive Care: A Guide to Training. London, AAGBI, 2011. Available at: <http://www.aagbi.org/sites/default/files/Ultrasound%20in%20Anaesthesia%20and%20Intensive%20Care%20-%20A%20Guide%20to%20Training.pdf>. Accessed December 20, 2013
4. Sites BD, Chan VW, Neal JM, Weller R, Grau T, Koscielniak-Nielsen ZJ, Ivani G; American Society of Regional Anesthesia and Pain Medicine; European Society of Regional Anaesthesia and Pain Therapy Joint Committee: The American Society of Regional Anesthesia and Pain Medicine and the European Society of Regional Anaesthesia and Pain Therapy Joint Committee recommendations for education and training in ultrasound-guided regional anesthesia. *Reg Anesth Pain Med* 2009; 34:40–6
5. Dalal PG, Dalal GB, Pott L, Bezinover D, Prozesky J, Bosseau Murray W: Learning curves of novice anesthesiology residents

- performing simulated fiberoptic upper airway endoscopy. *Can J Anaesth* 2011; 58:802–9
6. Westman B, Ritter EM, Kjellin A, Törkvist L, Wredmark T, Felländer-Tsai L, Enochsson L: Visuospatial abilities correlate with performance of senior endoscopy specialist in simulated colonoscopy. *J Gastrointest Surg* 2006; 10:593–9
 7. Hedman L, Ström P, Andersson P, Kjellin A, Wredmark T, Felländer-Tsai L: High-level visual-spatial ability for novices correlates with performance in a visual-spatial complex surgical simulator task. *Surg Endosc* 2006; 20:1275–80
 8. Ahlborg L, Hedman L, Murkes D, Westman B, Kjellin A, Felländer-Tsai L, Enochsson L: Visuospatial ability correlates with performance in simulated gynecological laparoscopy. *Eur J Obstet Gynecol Reprod Biol* 2011; 157:73–7
 9. Wanzel KR, Hamstra SJ, Caminiti MF, Anastakis DJ, Grober ED, Reznick RK: Visual-spatial ability correlates with efficiency of hand motion and successful surgical performance. *Surgery* 2003; 134:750–7
 10. Ferguson E, Semper H, Yates J, Fitzgerald JE, Skatova A, James D: The 'dark side' and 'bright side' of personality: When too much conscientiousness and too little anxiety are detrimental with respect to the acquisition of medical knowledge and skill. *PLoS One* 2014; 9:e88606
 11. Ferguson E: Personality is of central concern to understand health: Towards a theoretical model for health psychology. *Health Psychol Rev* 2013; 7(Suppl 1):32–70
 12. Wanzel KR, Hamstra SJ, Anastakis DJ, Matsumoto ED, Cusimano MD: Effect of visual-spatial ability on learning of spatially-complex surgical skills. *Lancet* 2002; 359:230–1
 13. Stefanidis D, Korndorffer JR Jr, Black FW, Dunne JB, Sierra R, Touchard CL, Rice DA, Markert RJ, Kastl PR, Scott DJ: Psychomotor testing predicts rate of skill acquisition for proficiency-based laparoscopic skills training. *Surgery* 2006; 140:252–62
 14. Hassan I, Gerdes B, Koller M, Dick B, Hellwig D, Rothmund M, Zielke A: Spatial perception predicts laparoscopic skills on virtual reality laparoscopy simulator. *Childs Nerv Syst* 2007; 23:685–9
 15. Hardy L, Parfitt G: A catastrophe model of anxiety and performance. *Br J Psychol* 1991; 82(Pt 2):163–78
 16. Meijer J: Learning potential and anxious tendency: Test anxiety as a bias factor in educational testing. *Anxiety Stress Coping* 2001; 14:337–62
 17. Sarason IG: Stress, anxiety, and cognitive interference: Reactions to tests. *J Pers Soc Psychol* 1984; 46:929–38
 18. Elliot A, Pekrun R: Emotion in the hierarchical model of approach-avoidance achievement motivation, Emotion in Education. *Educational Psychology Series*. Edited by Schutz PA, Pekrun R. San Diego, CA, Elsevier Academic Press, 2007, pp 57–73
 19. Putwain DW, Symes W: Achievement goals as mediators of the relationship between competence beliefs and test anxiety. *Br J Educ Psychol* 2012; 82(pt 2):207–24
 20. Bertua C, Anderson N, Salgado JF: The predictive validity of cognitive ability tests: A UK meta-analysis. *J Occup Organ Psychol* 2005; 78:387–409
 21. Peters M, Laeng B, Latham K, Jackson M, Zaiyouna R, Richardson C: A redrawn Vandenberg and Kuse mental rotations test: Different versions and factors that affect performance. *Brain Cogn* 1995; 28:39–58
 22. Peters M, Chisholm P, Laeng B: Spatial ability, student gender, and academic performance. *J Eng Educ* 1995; 84:69–73
 23. Voyer D, Voyer S, Bryden MP: Magnitude of sex differences in spatial abilities: A meta-analysis and consideration of critical variables. *Psychol Bull* 1995; 117:250–70
 24. Witkin HA, Oltman PK, Raskin E, Karp S. A Manual for the Embedded Figures Test. Palo Alto, CA, Consulting Psychologists Press, 1971
 25. Witkin HA, Oltman PK, Raskin E, Karp S. Group Embedded Figures Test Manual. Palo Alto, CA, Consulting Psychology Press, 1971
 26. Heim AW: AH4 Group Test of General Intelligence Manual. Windsor, United Kingdom, NFER-Nelson Publishing Company Limited, 1970
 27. Matthews G, Jones DM, Chamberlain AG: Refining the measurement of mood: The UWIST Mood Adjective Checklist. *Br J Psychol* 1990; 81:17–42
 28. Matthews G, Joyner L, Gilliland K, Campbell SE, Falconer S, Huggins J: Validation of a comprehensive stress state questionnaire: Towards a state big three. *Pers Psychol Eur* 1999; 7:335–50
 29. Caraway K, Tucker CM, Reinke WM, Hall C: Self-efficacy, goal orientation, and fear of failure as predictors of school engagement in high school students. *Psychol Sch* 2003; 40:417–27
 30. Ultrasound-guided Needle Advancement for Novices. 2013. Available at: <https://www.youtube.com/watch?v=5VaXrqjRIVs>. Accessed August 10, 2014
 31. Beese RC, Lowe S: The use of turkey breast and stuffed olives as a soft tissue model for the teaching and practice of ultrasound guided interventional procedures. *European J Ultrasound* 1998; 7:12
 32. Sites BD, Gallagher JD, Cravero J, Lundberg J, Blike G: The learning curve associated with a simulated ultrasound-guided interventional task by inexperienced anesthesia residents. *Reg Anesth Pain Med* 2004; 29:544–8
 33. Davies T, Townsley P, Jjala H, Dowling M, Bedforth N, Hardman JG, McCahon RA: Novice performance of ultrasound-guided needle advancement: Standard 38-mm transducer vs 25-mm hockey stick transducer. *Anaesthesia* 2012; 67:855–61
 34. Sites BD, Spence BC, Gallagher JD, Wiley CW, Bertrand ML, Blike GT: Characterizing novice behavior associated with learning ultrasound-guided peripheral regional anesthesia. *Reg Anesth Pain Med* 2007; 32:107–15
 35. Friedman Z, Katznelson R, Devito I, Siddiqui M, Chan V: Objective assessment of manual skills and proficiency in performing epidural anesthesia—video-assisted validation. *Reg Anesth Pain Med* 2006; 31:304–10
 36. Naik VN, Perlas A, Chandra DB, Chung DY, Chan VW: An assessment tool for brachial plexus regional anesthesia performance: Establishing construct validity and reliability. *Reg Anesth Pain Med* 2007; 32:41–5
 37. Chin KJ, Tse C, Chan V, Tan JS, Lupu CM, Hayter M: Hand motion analysis using the imperial college surgical assessment device: Validation of a novel and objective performance measure in ultrasound-guided peripheral nerve blockade. *Reg Anesth Pain Med* 2011; 36:213–9
 38. Hopkins WG: A New View of Statistics. Internet Society for Sport Science. 2000. Available at: <http://www.sportsci.org/resource/stats/>. Accessed April 10, 2014
 39. Shrout PE, Fleiss JL: Intraclass correlations: Uses in assessing rater reliability. *Psychol Bull* 1979; 86:420–8
 40. Lexell JE, Downham DY: How to assess the reliability of measurements in rehabilitation. *Am J Phys Med Rehabil* 2005; 84:719–23
 41. Linn MC, Petersen AC: Emergence and characterization of sex differences in spatial ability: A meta-analysis. *Child Dev* 1985; 56:1479–98
 42. Kolozsvari NO, Andalib A, Kaneva P, Cao J, Vassiliou MC, Fried GM, Feldman LS: Sex is not everything: The role of gender in early performance of a fundamental laparoscopic skill. *Surg Endosc* 2011; 25:1037–42
 43. Grantcharov TP, Bardram L, Funch-Jensen P, Rosenberg J: Impact of hand dominance, gender, and experience with computer games on performance in virtual reality laparoscopy. *Surg Endosc* 2003; 17:1082–5
 44. Eysenck MW: Anxiety and cognitive-task performance. *Pers Individ Differ* 1985; 6:579–86
 45. Pijpers JR, Oudejans RR, Bakker FC: Anxiety-induced changes in movement behaviour during the execution of a complex whole-body task. *Q J Exp Psychol A* 2005; 58:421–45

Appendix 1. Composite Error Score for Ultrasound-guided Needling Task

Visuo-spatial ability as a predictor of novice performance in ultrasound-guided regional anesthesia (USGRA).

Participant
numberStudy
period

Errors - Please tick each time an error is made

- Needle advanced without visualisation of needle tip
- Failure to identify the target
- Failure to recognise orientation of probe with the image screen
- Unintentional probe movement
- Target malpositioned on screen, including incorrect depth selection
- Attention focussed on hand and not image as needle advanced

Total number of errors

 Box A

Number of needle passes*

* A needle pass is defined as a new puncture of the turkey breast or if the needle is withdrawn towards the exterior of the turkey breast.

 Box B

Image quality scale (select one)

Scale	Image quality	Description		
0	Ideal	<ul style="list-style-type: none"> Olive viewed on highest resolution & all contents visualized Whole needle seen as contacted wall 	0	Ideal
1	Good	<ul style="list-style-type: none"> Olive imaged well enough to define all aspects of contents Needle tip & part of shaft seen as contacted wall 	1	Good
2	Satisfactory	<ul style="list-style-type: none"> Olive visualized so at least wall was identifiable Needle tip seen as contacted wall 	2	Satisfactory
3	Poor	<ul style="list-style-type: none"> Olive wall was only partly visualized Needle contact was identifiable only by tissue distortion 	3	Poor

 Box C

Composite Error Score

(Box A + Box B + Box C)

Time to perform task

 s

Appendix 2. Global Rating Scale for Ultrasound-guided Needling Task

Visuo-spatial ability as a predictor of novice performance in ultrasound-guided regional anesthesia (USGRA).

Participant Number

Study Period

Global Rating Scale for UGRA.

	Please tick and score each of the 7 items below appropriately;				
	1	2	3	4	5
Preparation for procedure	Did not organise equipment well Has to stop procedure frequently to prepare equipment.		Equipment generally organised. Occasionally has to stop and prepare items.		All equipment neatly organised, prepared and ready for use.
	[]	[]	[]	[]	[]
Time and motion	Many unnecessary moves.		Efficient time/motion but some unnecessary moves.		Clear economy of movement and maximum efficiency.
	[]	[]	[]	[]	[]
Instrument handling	Repeatedly makes tentative or awkward moves with instruments.		Competent use of instruments but occasionally appeared stiff or awkward.		Fluid moves with instruments and no awkwardness.
	[]	[]	[]	[]	[]
Flow of Procedure	Frequently stopped procedure and seemed unsure of next move.		Demonstrated some forward planning with reasonable progression of procedure.		Obviously planned course of procedure with effortless flow from one move to the next.
	[]	[]	[]	[]	[]
Image quality	Inadequate image. Target partially visualised. Needle movement only identifiable by tissue distortion.		Good image. Most of target visualised. Needle tip and part of needle shaft visible.		Outstanding image. Unequivocal image with complete structure visualised. Whole of needle visible.
	[]	[]	[]	[]	[]
Knowledge of procedure	Deficient knowledge.		Knew all important steps of procedure		Demonstrated familiarity with all aspects of procedure
	[]	[]	[]	[]	[]
Overall performance	Very poor.		Competent.		Clearly superior.
	[]	[]	[]	[]	[]