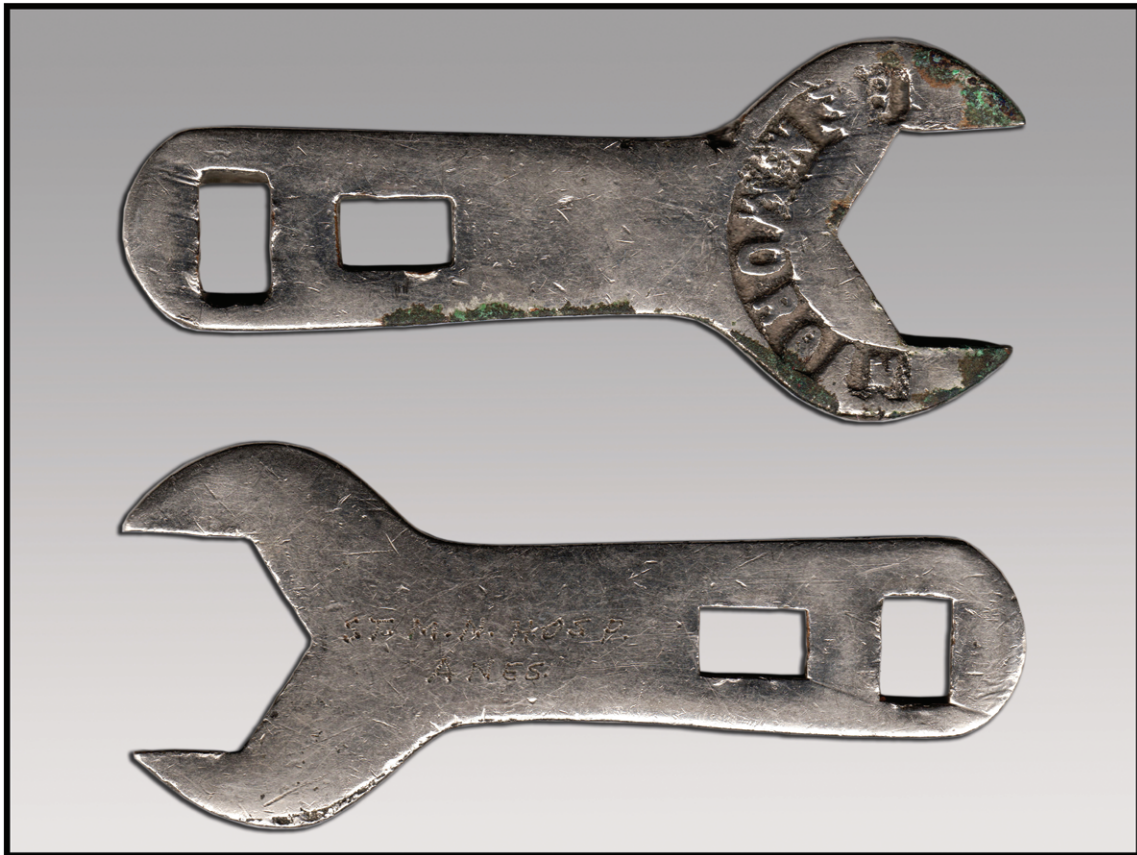


- abdominal surgery: A randomised controlled pilot study (ISRCTN 11799696). *Int J Surg* 2008; 6:197–204
39. Jover JL, García JP, Martínez C, Espí A, Gregori E, Almagro J: [Hydroxyethyl starch to protect renal function in laparoscopic surgery]. *Rev Esp Anesthesiol Reanim* 2009; 56:27–30
 40. Annane D, Siami S, Jaber S, Martin C, Elatrous S, Declère AD, Preiser JC, Outin H, Troché G, Charpentier C, Trouillet JL, Kimmoun A, Forceville X, Darmon M, Lesur O, Reignier J, Régnier J, Abroug F, Berger P, Cle'h C, Cle'h C, Cousson J, Thibault L, Chevret S; CRISTAL Investigators: Effects of fluid resuscitation with colloids *vs* crystalloids on mortality in critically ill patients presenting with hypovolemic shock: The CRISTAL randomized trial. *JAMA* 2013; 310:1809–17
 41. Shaw AD, Kellum JA: The risk of AKI in patients treated with intravenous solutions containing hydroxyethyl starch. *Clin J Am Soc Nephrol* 2013; 8:497–503
 42. Lobo DN, Stanga Z, Aloysius MM, Wicks C, Nunes QM, Ingram KL, Risch L, Allison SP: Effect of volume loading with 1 liter intravenous infusions of 0.9% saline, 4% succinylated gelatine (Gelofusine) and 6% hydroxyethyl starch (Voluven) on blood volume and endocrine responses: A randomized, three-way crossover study in healthy volunteers. *Crit Care Med* 2010; 38:464–70
 43. Graffe CC, Bech JN, Lauridsen TG, Vase H, Pedersen EB: Abnormal increase in urinary aquaporin-2 excretion in response to hypertonic saline in essential hypertension. *BMC Nephrol* 2012; 13:15

ANESTHESIOLOGY REFLECTIONS FROM THE WOOD LIBRARY-MUSEUM

Wrenching Clues from a Key: “Morgan” & “M. N.”



One face (*top*) of this compressed gas cylinder wrench (“key”) bears the mold mark “Morgan.” Chicago’s Ben Morgan, M.D., was an early manufacturer of ether machines who by 1945 had shifted his interests away from obstetric anesthesia and toward the general practice of gynecology. On the back of this Ben Morgan cylinder wrench the letters “M. N.” are engraved. Closer inspection reveals additional rough scratching which seems to read (*bottom*): “ST. M. N. HOSP./ANES.” Established to treat large waves of immigrants from Poland to Chicagoland, Saint Mary of Nazareth Hospital (our wrench’s “ST. M. N. HOSP.”) was founded by the Sisters of the Holy Family of Nazareth in 1894. So “Morgan” on one side and “M.N.” on the other are clues to the interesting provenance behind this piece of anesthesia history. (Copyright © the American Society of Anesthesiologists, Inc.)

George S. Bause, M.D., M.P.H., Honorary Curator, ASA’s Wood Library-Museum of Anesthesiology, Schaumburg, Illinois, and Clinical Associate Professor, Case Western Reserve University, Cleveland, Ohio. UJYC@aol.com.