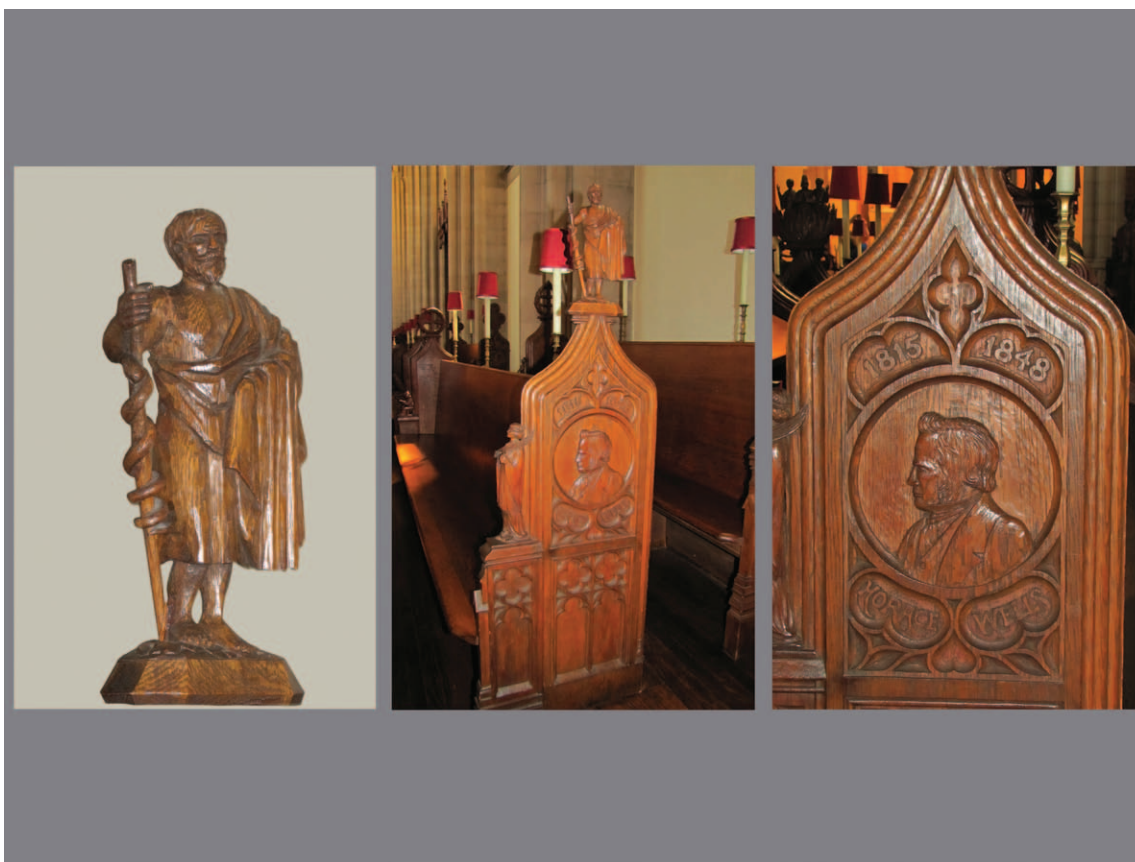


94. Duric V, McCarson KE: Persistent pain produces stress-like alterations in hippocampal neurogenesis and gene expression. *J Pain* 2006; 7:544–55
95. Patki G, Solanki N, Atrooz F, Allam F, Salim S: Depression, anxiety-like behavior and memory impairment are associated with increased oxidative stress and inflammation in a rat model of social stress. *Brain Res* 2013; 1539:73–86
96. Blugeot A, Rivat C, Bouvier E, Molet J, Mouchard A, Zeau B, Bernard C, Benoliel JJ, Becker C: Vulnerability to depression: From brain neuroplasticity to identification of biomarkers. *J Neurosci* 2011; 31:12889–99
97. Duric V, McCarson KE: Hippocampal neurokinin-1 receptor and brain-derived neurotrophic factor gene expression is decreased in rat models of pain and stress. *Neuroscience* 2005; 133:999–1006
98. Bennett MR, Lagopoulos J: Stress and trauma: BDNF control of dendritic-spine formation and regression. *Prog Neurobiol* 2014; 112:80–99
99. Tajerian M, Alvarado S, Millicamps M, Vachon P, Crosby C, Bushnell MC, Szyf M, Stone LS: Peripheral nerve injury is associated with chronic, reversible changes in global DNA methylation in the mouse prefrontal cortex. *PLoS One* 2013; 8:e55259
100. Linnman C, Becerra L, Lebel A, Berde C, Grant PE, Borsook D: Transient and persistent pain induced connectivity alterations in pediatric complex regional pain syndrome. *PLoS One* 2013; 8:e57205
101. Uchida H, Matsushita Y, Ueda H: Epigenetic regulation of BDNF expression in the primary sensory neurons after peripheral nerve injury: Implications in the development of neuropathic pain. *Neuroscience* 2013; 240:147–54

## ANESTHESIOLOGY REFLECTIONS FROM THE WOOD LIBRARY-MUSEUM

### The Horace Wells Pew in Trinity College Chapel



In 1937 in Hartford, Connecticut, the Horace Wells Club presented a pew to Trinity College Chapel to memorialize the dentist who popularized the anesthetic use of nitrous oxide, Dr. Horace Wells. A profile bust of Wells (*right*) is carved between pairs of dental silhouettes, “Horace” and “Wells” beneath and his years of life above, from “1815” to “1848.” Wells’ portrait faces a carved figure (*middle*) of Saint Apollonia, the martyred patron saint of dentistry. A carving of Asklepios (Aesculapius), the ancient Greek god of medicine, tops (*left*) this end of the pew. (Copyright © the American Society of Anesthesiologists, Inc.)

*George S. Bause, M.D., M.P.H., Honorary Curator, ASA’s Wood Library-Museum of Anesthesiology, Schaumburg, Illinois, and Clinical Associate Professor, Case Western Reserve University, Cleveland, Ohio. UJYC@aol.com.*